



EXHIBITING AROUND TOWN in October-December!

- Chris Sisak & Diane Tank @ The Friendly Home
- Kathy Wagner @ Star Physical Therapy
- Myrna Watskin @ Pittsford Town Hall
- Tina Kolberg @ Presbyterian Church

Pittsford Art Group

November 2013

Message from The Co-President: Brande Arno

PAG has been busy and that is great. Inside this newsletter, you'll see pictures from our November show at the Legacy.

Liz Sciortino is preparing for our annual Winter show at the Pittsford Credit Union. That information is included in this newsletter.

We also have our December Lumiere show. This is an invitational show to honor our members who have (in the past five years) served on the board,

chaired a show, or served as a committee chair for two or more years.

It is my hope that all members who can, will attend the opening reception on Friday, December 6 from 3:30 - 5:30 pm. This is also First Friday and many artist's studios will be open to visit after the reception.

Let me end by reminding everyone there will not be a members meeting in December. Enjoy your Holidays and see you in 2104!

The Legacy at Blossom Show!

If you missed the Opening Reception to the Legacy at Blossom Show you missed a well attended event with great food, wonderful company, and awesome art! While the award winners are listed below, a *huge* thank you goes out to all members who assisted **Jan Davidson** and **Anne Jurgens** in putting on this well organized event. Thank you all!

Judge: Valerie Larsen

Best of Show

Kathleen Wagner—*Around the Bend*

Body of Work Awards

David Shuttleworth—*Fall Shower, February Sunset, Early Morning*

Alice Gold—*Family, Three Figures, Two Figures*

Juror Awards

Bill Haywood—*Road to Los Alamos*

Robert Ross—*Kindred Breeze*

Christine Sisak—*Calm before the Storm*

Christine Sisak—*Send Off*

Kathleen Wagner—*Dockside*

Lynn Wickes—*On the Way*



Around the Bend
Kathleen Wagner
Best of Show

Merit Awards

Jan Davidson—*Still waiting for the Call*

Bill Haywood—*Weather on Monhegan Island*

Anne Jurgens—*Yellow Vase*

Betsy Liano—*Pear Blossoms*

Carol Thiel—*Lake Placid Club View*

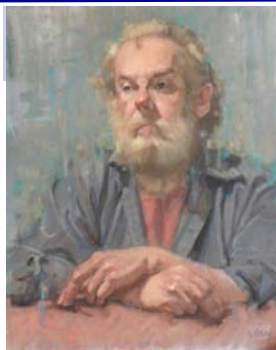
Lynn Wickes—*Road to Naples*



WEBSITE NEWS—Survey coming soon!

Keep an eye out for our Website survey coming to your mail box or email in-box soon!

MEMBERS OUT & ABOUT



Kathy Bolin took home Best in Show for her portrait painting (left) and a Merit Award at the Fall Rochester Art Club Show.

David Shuttleworth won Best in Show at the Brighton Arts Fest!

Congratulations to **Lynn Wickes**. She has become a Signature Member of the Rochester Art Club!

Sylvie Culbertson has two painting hanging up in the MAG Gift Shop!

Pictures from The Show at the Legacy!



Anne Jurgens presenting an award to **Bill Haywood**



Jan Davidson



Alice Gold standing before two of her three pieces to earn her a Body of Work Award



Works by **Jan Davidson** (top) and **Christine Sisak** (bottom)



New member **David Shuttleworth** receiving a Body of Work Award!

MARK YOUR CALENDARS!

Saturday, 12/14—**Legacy**
Critique and take down
11am-1pm



Anne Jurgens, Alice Gold & Co-president Margie Mitchell

ARTIST SPOTLIGHT— Carol Thiel



I love being outdoors and am a member of the Adirondack 46ers. Club entry requires that you climb the 46 highest peaks in the Adirondacks.

I joke that before, I climbed them and now I paint them. I am awed by nature and driven to depict light and color.

I once hiked in Olympic National Park with a group that included Adirondack artist Sandra Hildreth, who would do watercolor sketches during lunch breaks.

I haven't ventured too far from the road with my oils yet, but have been spotted doing watercolor sketches or value studies on smaller peaks and wilderness lakes as well as in local parks.

As a fairly new member of the PAG, I am challenged by my fellow members' work (and opportunities to show) to paint more and better!



I enjoyed making art growing up but switched my major to science in high school due to concern about my ability to make a living in the art world. I didn't pick up a paintbrush for decades, until family needs led me to cut back to part-time and I had more free time. Since then my studies have included classes at MCC (learning oil painting with the late Julie Williams) and more recently getting into plein air painting with Carol Douglas.

ATTENTION!!! PFCU SHOW!

The PAG Winter (non-juried) show at the Mendon Branch of the Pittsford Federal Credit Union will run from November 26th through mid-February.

One entry. \$5.00 per entry!

Bring one painting on Tuesday, November 26th between 10am and 12noon. Liz Sciortino and volunteers will take down your information!



ROTATING EXHIBIT SPOTS OPEN FOR NEXT YEAR!

Contact Laura Davis if you
are interested:

davisdyn@rochester.rr.com

Or catch her at our monthly
meetings. She's the lady with the
clipboard!

Dates to Remember!

Tuesday, Nov 26th—PFCU
Show Drop off

Tuesday, Dec 3rd, Lumiere
Volunteer Show drop off

Friday, Dec 6 Lumiere Open-
ing Reception 3:30-5:30

PAG Board Members

**Brande Arno & Margie
Mitchell—**

Co-Presidents

Kathy Bolin—

Vice President

Kitty Lawrence—

Treasurer

Sylvie Culbertson—

Secretary

Christine Sisak—

Corresponding Secretary

Have News to Share?

Contact Christine Sisak at
csisak5@naz.edu, or
3454 Rush-Mendon Road/
Honeoye Falls, NY 14472

Thank you to all of the
Show photographers!
Carol Thiel, Chris Sisak
Sylvia Ball, Carol Kenyon

See you in December!

Save the Dates! PAG Schedule of Events

11/26—**PFCU Show** drop off 10am-12noon

12/3—**Lumiere** Volunteer Show drop off 10am-11:30am/Hanging 12-2pm

12/6—**Lumiere** Volunteer Show opening reception 3:30-5:30pm

12/14—**Legacy** Critique and take down—11am-1pm

12/27—**Lumiere** Volunteer Show ends

12/28—**Lumiere** Volunteer Show take down—10am-2pm

1/2—PAG Meeting—Dick Kane—water soluble oils—landscape

2/6—PAG Meeting—Kathleen Haney—pastel

Mid-Feb TBA—PFCU pick-up—stay tuned

March—B & N Show—To be Announced

4/3—PAG Meeting—Denise Heischman—acrylic

5/1—PAG Meeting—mini workshops—Sylvia Ball (calligraphy), Brande Arno
(watercolor collage), Barbara Jablonski (oil)

June 5th—PAG Picnic

Events in the planning

March—The Spring Show @ Barnes & Noble

May—PAG paints Plein Aire

More from the Show...



Margie Mitchell and Diane Tank



Robert Ross!



Betsy Liano



Lynn Wickes