



Pittsford Art Group

February, 2018

Letters from our Co-Presidents
Margie Mitchell & Jan Davidson

Exhibiting around
town
Dec31-March31

Pittsford Town Hall
Barbara Jablonski

Friendly Home
Main Gallery
Tracie Doerner
&
Memory Care Unit
Joe Sirianni

Star PT
Betsy Liano

Presbyterian Church
Marcia Mundrick

organized by
Laura Davis

Dear Members,

March can be the bleakest month of all, but we are about to liven it up with a great Barnes and Noble show. A big "Thank you" to all of the talented artists that have entered the show. We have a good number of entries and growing every day. I don't know if I will be able to make it, but I will try to. So please take lots of pictures for the Newsletter. I can't wait to view what you all have created. Have a nice day and see you all soon!



Something to think about: the board still needs a Treasurer, it's a great opportunity and it can be a lot of fun

Margie Mitchell

A note from Carol Kenyon to members:

My ALS is progressing rapidly and my church and Madrigal are going to be honoring me on Friday, March 2 and Saturday, March 3 with a concert and a display of my art. It's at 7:30pm Baptist Temple, 1101 Clover Street. Any members interested in attending are invited.

Amy Hobert typed up new membership booklets and passed them out to the members present. She will update them 2 times a year.

Reminder This weekend:

Annual Spring Show at Barnes & Noble
-dates to remember-
March 4, Sunday 10 am-12 noon drop off and selection
March 10, Saturday 1-3 pm reception
March 29, Thursday 6-8 pm critique and take down

End of Year Picnic, June 7, 2018

Demonstration 1-3 pm,

Students 3-4pm, Awards 4 pm,

Supper 5-6 pm

Nancy Lane will conduct a plein air demonstration: weather permitting.

Reminder:

Next meeting is April 5th
at the Pittsford Town Hall
back door, downstairs,
7:00- 7:30pm

We will have a demo by
Kari Ganoung Ruiz
Plein Air Painter and
Best in Show at the Finger Lakes Plein
Air Festival 2017

Betsey Liano has a contact at St John's if you would like to show some work for a month.

PAG Board Members

Margie Mitchell-
Co- President

Jan Davidson
Co- President

David Shuttleworth-
Treasurer

Sylvie Culbertson-
Recording
Secretary

Ann Limbeck-
Corresponding
Secretary

Carol Kenyon-
Historian

Laura Davis
Rotating
Exhibits

Barb Jablonski is offering her
"Paint Spring Colors En Plein Air"
Tues May15-Thurs May17

Please call Ann Limbeck at 385-7773 if you can bring a snack to our next mtg.

PAG made it into the Brighton Pittsford Post "IN BRIEF" last month. We are always seeking new members; Bring an interested friend or colleague to our next meeting!

Carol Kenyon is no longer able to be our historian due to health reasons. She has dedicated many years to this job and we will miss her work and time profoundly. It is our desire to name one of the two scholarships we give out at the end of the school year to graduating seniors in the Pittsford Public School District for her.

Kirt Lapham has resumed the care of our website.

- * We are adding a member gallery featuring our art work send him 3-4 images of your work and a short description with bio including other clubs or website
- * Our current newsletter will also be featured on it.
- * You can like it on facebook

Help!

Please send us names of anyone you would like to see as a demonstrator next year, or if you would like to demonstrate yourself. It is sometimes hard to find demonstrators that we think you will enjoy!

We would like to revive an old tradition and start featuring a member each month in the newsletter. If you are interested please submit a 5-10 sentence bio and 3 pictures of your most recent work. If you could photograph your work without glass on it and unframed we could really get a good image of your work. Please send your bio and images, to Ann Limbeck. If you need help or have questions, email me at awlimbeck@gmail.com

Congratulations to:

Sylvia Ball and Sylvie Culbertson

They sold paintings at our winter show at The Pittsford Federal Credit Union!

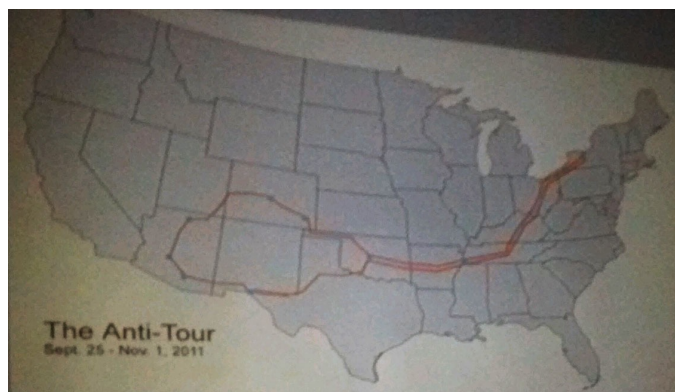


Jim Mott, our presenter for February, is in my opinion a very humble artist, who also has a very different approach to his work. Jim graduated from the Pittsford School District. He describes himself as a landscape artist, and he has a very unique way going about his work. For the last 17 years he has literally forced himself to be totally interactive with his work. He likes to be intensely responsive as he interacts with his materials, subject and the environments he finds himself in. Jim has worked with grants that allowed him to travel around the country meeting people in many of our states. These were called the

“Landscape projects.” Since the year 2000, Jim has traveled the states staying with strangers and exchanging this time by giving his hosts the choice of a completed plein air painting of the area. He said this “adds a social fabric to his creative process.” No matter how long he has done this he still faces the fear of starting a new painting each time.

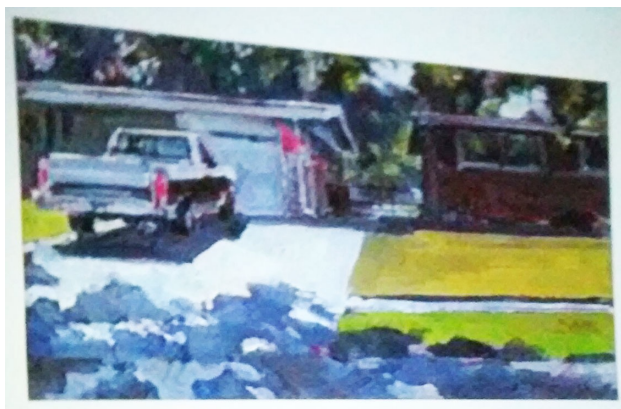
Jim started by placing an ad in “The Nation,” a political magazine that is subscribed to by people all across the US. He simply stated his idea requesting visits for about three days, where he judged he could create about 8 paintings in this time frame. He originally got only one response in California, but within a month he was invited all over the USA, 15 towns in all. His first invitation came from a family who’s parents wanted the children to see a real artist at his work. He mapped his travels as he went. It sounds like great fun, which it was, but he found himself worn out from moving so often. He once stayed with someone on the Chesapeake Bay who knew everything there is to know about the environment. This was such a reward! He has traveled all over the states from Washington State, the Great Plains and the Northeast, as well as the Southeast. While staying in Yellowstone he once swam in one of the hot springs unaware of the fact that a brain eating amoeba lived in it. He could clearly write “a critique of our society.” He found himself painting 3 pictures of two pine trees, two weeks after 9/11.

Jim also had to accommodate himself by building a painting box where his pictures can dry as he travels. This limits the size, but makes things uniform. He mixes his own green never using it from the tube sometimes even yellow and black. He paints on panels that he has painted solid colors before he starts a landscape.

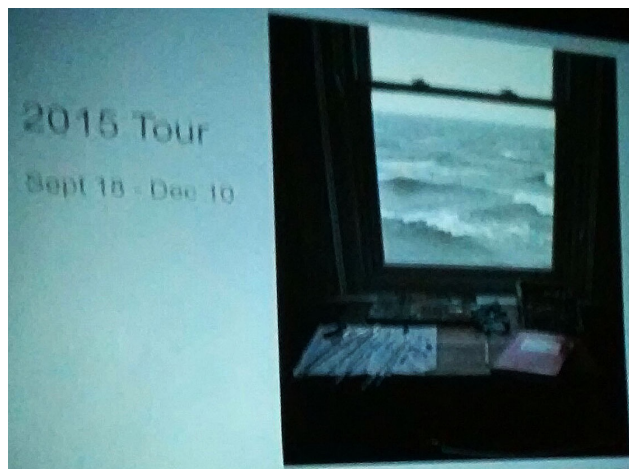
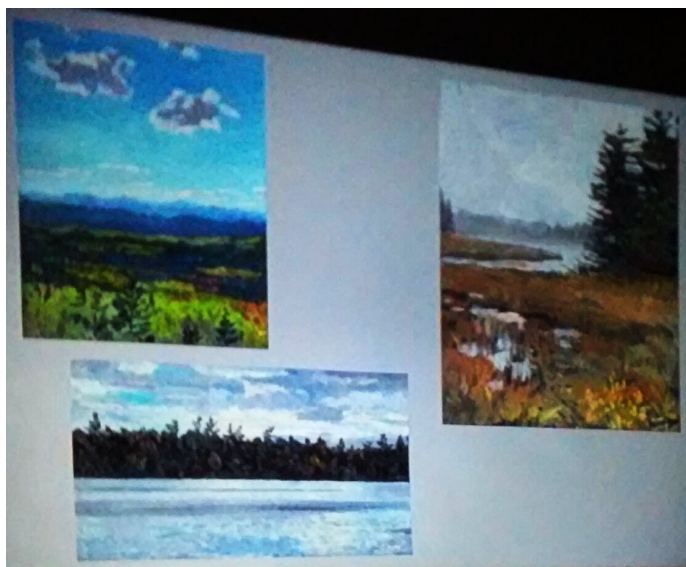
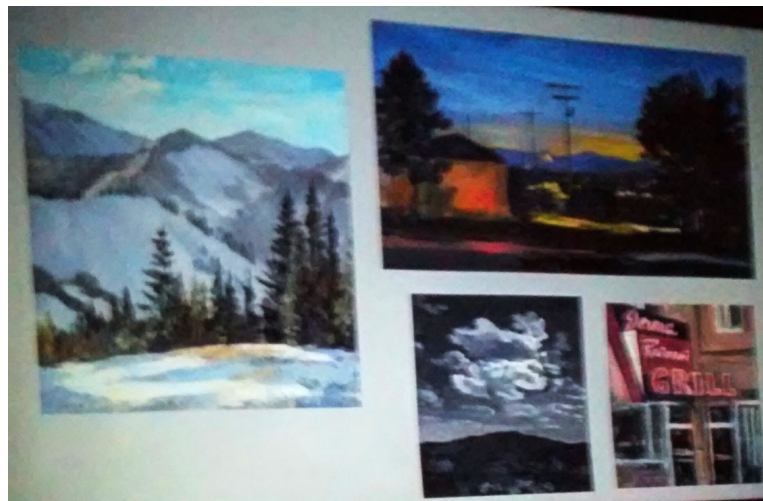


Jim has been written up in the “Christian Science Monitor” and interviewed on the Today Show. (which resulted in one \$200.00 sale.) He has painted in Crossneck where Winslow Homer painted. He paints from the heart “some good, some bad,” and he “never feels like he knows what he is doing.” Regardless I found his paintings vibrant and alive. With all his doubts about himself he has certainly overcome and pushed himself with a purpose, a good plan and a goal in mind. I was very inspired by his talk.

Today Jim is working on “The Landscape Lottery” closer to home. He has been working with students from MCC. This involves defining an area on the map. Much like Geo cashing, the students graph an area using a 6 X 6 grid and then roll dice to see which area they will close in on. This repeats several times until they are focused in on a small spot like an intersection of the city. They must go there and paint whatever exists there. In theory it sounds like fun, but in reality it can be nightmare if it turns out to be a place that totally lacks any aesthetic views. It sounds like another planned/ unplanned challenge with unpredictable results.



A truck across the street.



Lake Erie storm looking out a window.

