



Pittsford Art Group

April, 2019

Letter from our President Margie Mitchell

Dear Members,

Exhibiting around town
April-June

Pittsford Town Hall

Sylvia Ball

Friendly Home
Main Gallery

Hiroko Justo

&

Friendly Home
Memory Care Unit

Tracie Deorner

Star PT

Sylvie

Culbertson

Presbyterian Church

Joe Sirianni

Pittsford Village Hall

Ann Limbeck

May is coming up quickly and summer is right around the corner. Ann Limbeck is planning a paint out for members instead of our picnic, that should be a fun day for all. This will be discussed at our next meeting.

Our last event for this season is Paddle and Pour, May 25th Schoen Place, please bring your art work by 9 am till 10:30am, please bring paintings and cards and prints to this event, include prices and have all information on each painting, card or print. I appreciate everything the people that organized this event have done for us, by dropping the tent fee to \$75 instead of \$125 that shows us that they want us there.

This has been a very nice year for us with many wonderful presenters, we moved to the Spiegel Center. I hope everyone appreciates the move, any concerns let the board know. We are still working out the arrangement of the chairs and tables and presenter. We have some fun ideas for next year as well.

I have asked a couple people to step up to two positions but have not received an answer back. We are desperate to fill these positions as there is just so many positions the present board members can do. If we do not get any nominations for these two position we may have to think about joining with the Penfield art group, or reconstructing the board all together.

Every group has to have a planning board or the group will break up. I hope this does not happen to us, but it remains a possibility if no one wants to serve on the board. The two positions are not hard positions. One records the other does the corresponding. You just have to be able to make time to do it. I have for the last few years and it can be fun and rewarding. Please think about joining the team!

Margie Mitchell



A new policy!

Guests are more than welcome and encouraged to join us at our monthly meetings, to hear and see what's going on, and to watch our wonderful demonstrators. To help with rising costs it would be appreciated if a \$5.00 donation was made to the group. If the guest would like to join our group their donation may be applied to their joining fee.

PAG Board Members

Margie Mitchell,
Jan Davidson-
Presidents

Marcia Mundrick-
Treasurer

Sylvie Culbertson,
Betsy Liano-
Recording
Secretary

Ann Limbeck,
Christine Sisak-
Corresponding
Secretaries

Remember: we have art panels to rent for up coming seasonal shows. Contact Chris Sisak at csisak@naz.edu for more info on sizes and cost.

Board descriptions and duties:

President or Co-Presidents

Schedule and preside over monthly meetings, times & dates at the SpiegelCenter
Preside over 3-4 board meetings when needed
Write a monthly note for the newsletter in time for publication (last week of month)
Support; Fall Show Chair
Spring Show Chair
Any other shows or standing committees
Be available to advise other officers and the PAG Board
Oversee yearly voting for board members & officers in April/May
Turn in to town historian in June, copies of season's PAG newsletters

Vice President or Co-Presidents

Support or share the role of President
Assume or share the President's position the following year
Co-chair shows
Preside over meetings when President is not available
***Organize active interest in the function of the group including monthly demonstrators

Recording Secretary

Purpose-Record and report the minutes of monthly meetings and board meetings
Qualifications- Good listening and writing skills, typing and computer skills helpful.
Responsibility-
Must be available for meetings and accurately record information discussed.
Collect year end Treasurer's report after June, to complete the records.
Print minutes in timely fashion after each meeting and send copy to each officer and board member.

Corresponding Secretary

Purpose-Emailing and mailing 10 PAG newsletters and other information.
Qualifications-Must be organized and have access to a computer with general knowledge to maintain communications.
Responsibility-
Emailing/ mailing monthly newsletter be received before the first of the month.
Emailing/ mailing of general group notices.
Forwarding information and notices from President.
Maintaining office supplies, paper, ink, stamps.
Maintain up to date contacts and email addresses

For those who have
paintings at the Pittsford
Village Hall, Please pick
up your work by May 1st.

Our picnic this year
will be a paint out
on June 6, 10-2.
More to follow.

Our next meeting is May 2, at 7:00pm, Spiegel Bldg.
Come and Vote!

Grant Lounsbury will be our next speaker/ demonstrator. Check out his website and art work at: <https://glounsburyfineart.wixsite.com/grantlounsbury>

Carol Thiel will be our chairperson for

Paddle & Pour May 25th.

The entrance fee is \$5.00 for any number of paintings/cards. The town is very anxious that we continue our presence.

Please be generous with your time and sign up to man our booth with Carol.

time: drop off and set up 9:00 am

Sale hours; 12-6.



Please continue to bring and share snacks at our monthly meetings. Thank you to all who have.



Attention: Membership Dues will be \$40.00 next year.

Chip Stevens was our presenter last month. He provided a lifetime of knowledge and experience. He has been a plein air painter for 45 years and is currently exploring wrecks of Lake Ontario. He boasted that his first one man show was "73 years ago in 1st grade!" He is a former member of the PAG and a 30 year licensed architect. His painting goal is to be better than Winslow Homer! He is in numerous watercolor societies and is a member of the Whiskey Painters of America.

Chip uses Arches 140lb watercolor paper and all of his equipment is lightweight and well tested. He stands at an

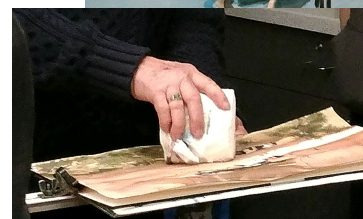
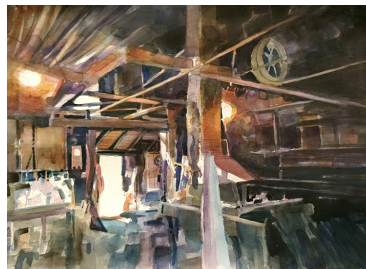
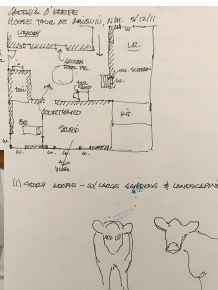
aluminum easel that holds his paper flat, uses a favorite old

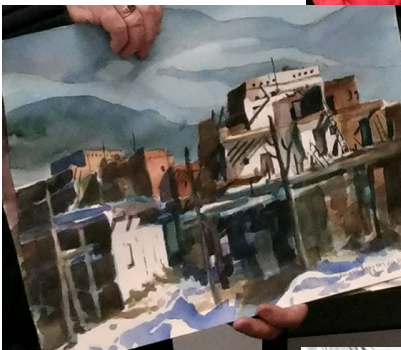
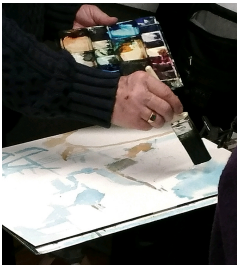
bucket for water and mostly Windsor Newton watercolor paint. He essentially uses 4 brushes: In his own words: "1- 1 1/2" nylon house brush (washes for sky), 1" flat (for almost everything), a little brush for details almost 50 years old (small objects) and a little smaller one (details for ship wrecks 15-17 yrs old.)"

Working with a couple of other men they find the ship wrecks using side scan sonar and GPS coordinates and a remote operated vehicle to take photos. The last one he painted sank in 1780. They have coordinated on a book, "Ship Wrecks of Lake Ontario" by Jim Kennard, Roland Stevens, and Roger Powloski.

Chip passed around many of his sketch books from around the world and past years. His sketches show many accurately depicted buildings, in plein air light, using 3 shades of gray. Chip sketches with a black pen and then colors in the shadows with a gray marker. He also has notes written-easy to follow later in the studio. His early stages of painting lay out his composition in hues of blue. His dark areas are enhanced by leaving the light areas the white of the paper. He tries to tell a story in his work and looks the for same when he is asked to judge. He described his pictures of architecture as "abstract realism!"

Chip uses various techniques in his paintings. He tilts his painting to migrate colors, balances colors to create a little repetition, blows on the paint in early stages for trees and rolls a roll of toilet paper over areas that need texture like rocks. He has painted on yup paper which makes it easy to lift color to create light.





Come and Vote!

SUNDAY	MONDAY	TUESDAY	WEDNESDAY	THURSDAY	FRIDAY	SATURDAY
2019 May						
			1	2 7:00 PA\$ Rm 19 Spiegel Center	3	4
5	6	7	8	9	10	11
12	13	14	15	16	17	18
19	20	21	22	23	24	25
26	27	28	29	30	31	

SUNDAY	MONDAY	TUESDAY	WEDNESDAY	THURSDAY	FRIDAY	SATURDAY
2019 June						
						1
2	3	4	5	6	7	8
9	10	11	12	13	14	15
16	17	18	19	20	21	22
23	24	25	26	27	28	29
30						

Paint Out



Any news ?
Please send to Ann at
awlimbeck@gmail.com

Attention: We will be conducting a contest for a new PAG Logo. Please put on your creative caps and try and come up with an original logo that would encompass all of our members and yet be simple enough to replicate on our newsletters and web site. Good Luck!

