



Pittsford Art Group

Newsletter - November, 2019

A Message from the President, Margie Mitchell

I'd like to thank everyone for making the fall show at the Rochester Friendly Home a success. I was very happy to see all the different paintings entered. One painting has already been sold.

Please remember that the judge will be doing our critique at our meeting on December 5th. The Rochester Friendly home was very helpful in all parts of the show. They even purchased extra hangers to make our show look better.

I hope everyone had a wonderful Thanksgiving with family and friends.

The Pittsford Federal Credit Union Winter show and sale is underway. Take a little time out of your busy schedule to check it out. We have already had a sale!

See you all at the next meeting!

"The world always seems brighter when you've just made something that wasn't there before." ~ Neil Gaiman

Rotating Exhibits October – December

Pittsford Town Hall

Ann Limbeck

Friendly Home

Marcia Mundrick and

Margie Mitchell

- Memory Care -

Hiroko Jusko

Marcia and Margie

(Dec)

Star P.T.

Niesdri Welch and

Elaine Sherwood

Presbyterian Church

Liz Sciortino

Pittsford Village Hall

Lois Zebelman

REMINDER!

Sylvia Ball will send **occasion appropriate cards** to members or their families. If you know of someone who is ill or a member that has passed please **email or call Sylvia Ball**.

Rochester Friendly Home Fall Show

32 Pieces of Artwork Submitted

ENTRIES:

ARTIST	TITLE	MEDIUM
Sylvia Ball	A Taste of Spring Red Beauty	Oil Oil
Francine Bonair	Rose Curious Puppy	Watercolor Watercolor
Sylvie Culbertson	Pura Vida Yesterday	Watercolor Watercolor
Laura Davis	Santa Maria House, Cascais English Garden	Oil Oil
Hiroko Jusko	Foggy Morning Stork	Watercolor Watercolor
Eunchung Kim	The Geranium	Oil Pastel
Betsy Liano	Monkey Meditation Churchyard Clematis	Watercolor Watercolor
Ann Limbeck	Looking South Mendon Hay Rolls Nation's Road Trumansburg Sheep	Oil, Plein Air Oil, Plein Air Oil Oil, Plein Air
Margaret Mitchell	Colorful Autumn Barn	Acrylic/Oil
Carol Schott	Kayak Camping Deer, Pittsford, NY Forest in Mist In Flight	Acrylic Oil Oil Oil
Cathy Schwegler	Lunch Hour Sunny Dragonfly Take Flight Happy Bee	Watercolor Watercolor Watercolor Watercolor
Joseph Sirianni	Camo	Epoxy Resin
Diane Tank	What Awaits Rainy Day	Acrylic Acrylic
Laurie Tapple	Apples Esperanza Bluff	Watercolor Watercolor Watercolor

AWARD WINNERS

Best of Show: Pura Vida...Sylvia Culbertson

Body of Work: Lunch Hour...Cathy Schwegler
Dragonfly
Take Flight
Happy Bee

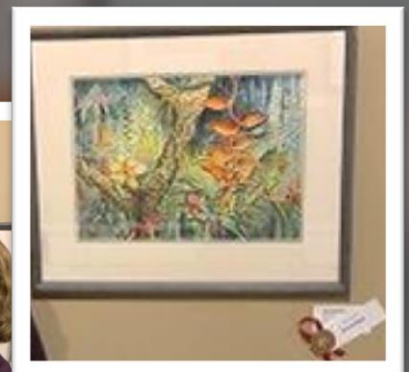
Juror's Awards: Stork...Hiroko Jusko
The Geranium...Eunchung Kim
Monkey Meditation...Betsy Liano
Churchyard Clematis...Betsy Liano
Apples...Laurie Tapple
Esperanza...Laurie Tapple

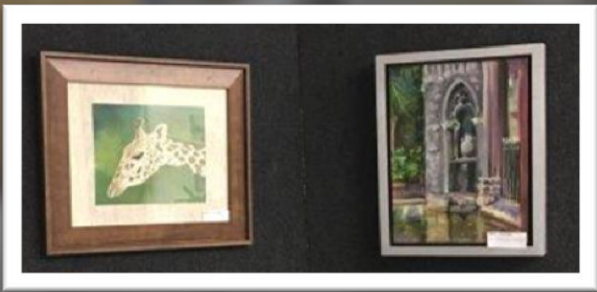
Merit Awards: Curious Puppy...Francine Bonair
Yesterday...Sylvia Culbertson
Trumansburg Sheep...Ann Limbeck
Colorful Autumn Barn...Margaret Mitchell
In Flight...Carol Schott
Rainy Day...Diane Tank



Rochester Friendly Home | Winter Show 2019

32 Pieces of Art on display





Current Shows

Winter Show - Friendly Home: November 2 thru December 28.

3156 East Avenue | Rochester, NY 14618

Chair: Carol Schott

Judge: Colette Savage

Artwork pickup and show takedown, Saturday, December 28, 9:00-11:00am.

Holiday Show - Pittsford Federal Credit Union: November 18 thru February 10.

1321 Pittsford Mendon Rd, Mendon, NY 14506

Chair: Liz Sciortino

Artwork pickup time will be announced in early February 2020.

WELCOME our New Members!

Welcome Eunchung Kim! We are very grateful to have you join our group.

Please reach out to your family and friends and invite them to come to one of our shows or monthly meetings and join!

REMINDERS

GUESTS are more than welcomed and encouraged to join us at our monthly meetings to hear and see what's going on and to watch our wonderful demonstrators. To help with rising costs it would be appreciated if a **\$5.00 donation** was made to the group. If the guest would like to join our group their donation may be applied to their joining fee.

OUR NEXT MEETING is **Thursday, December 5th** with presenter [Colette Savage](#): Colette is the judge for our Fall show at the Friendly Home. A life-long artist, Colette has been a plein air landscape painter for over a decade, painting on location in and around Monroe County.

2019-2020 MEMBERSHIP dues are **\$40**. Have you sent yours to **Amy Hobert**?

NEWS to share? Please send to **Joe Sirianni**

2019 – 2020 Positions

Executive Board Officers

President	Margaret Mitchell
Vice President	Betsy Liano
Treasurer	Marcia Mundrick
Recording Secretary	Sylvie Culbertson & Tong Wang
Corresponding Secretary	Joe Sirianni

Standing Committees

Membership	Amy Hobert
Program Chair	Betsy Liano
Refreshments	Niesdri Welsh
Rotating Exhibits	Laura Davis
Sunshine	Sylvia Ball
Website Manager	Joe Sirianni
Newsletter	Joe Sirianni

Shows this Season

Winter Show @ **Friendly Home**
Holiday Show @ **Pittsford Federal Credit Union**
Spring Show @ **Pittsford Plaza Barnes & Noble**