



Pittsford Art Group

Newsletter - December, 2019

A Message from the President, Margie Mitchell

I want to personally thank everyone that has participated in all of our events this year. I also want to thank the Board and Committee members for their wonderful jobs this year. Note that the entire list is found on the last page of each newsletter.

Just coming off a very nice juried show at the Rochester Friendly Home, this is a good time to think about what you want to enter next year in the Barnes and Noble show this coming March, 2020. It comes up quick so do not hesitate to prepare for this juried show as well.

If anyone has any interest in joining our Board or has time to commit to a committee this year please contact one of us on the Board.

Happy New Year to everyone!

See you all at the next meeting, January 2nd, 2020!

PAINTINGS SOLD:

Rochester Friendly Home

Sylvia Ball - Cardinal and Red Beauty

Laurie Tappel – Landscape

Pittsford Federal Credit Union

Margie Mitchell - Elephant

Rotating Exhibits

January – March

Pittsford Town Hall

Barbara Jablonski

Friendly Home

Carol Schott

Niesdri Welsh

- Memory Care -

Shirley Zimmerkidd

Star P.T.

Betsy Liano

Presbyterian Church

Hiroko Jusko

Pittsford Village Hall

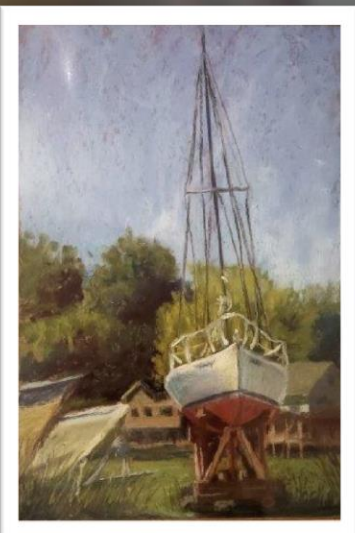
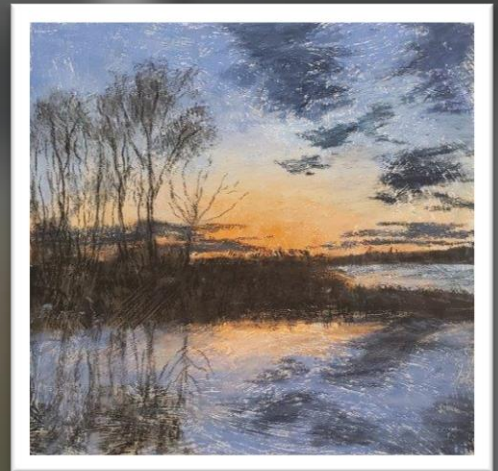
Sylvia Ball

REMINDER!

Sylvia Ball will send **occasion appropriate cards** to members or their families. If you know of someone who is ill or a member that has passed please **email or call Sylvia Ball**.

December 5 | Notes courtesy of Betsy Liano

Colette Savage, our Juror and presenter teaches at the Art Stop in Penfield and Monday evenings through Irondequoit Community Education. She is a Board member of the Suburban Art Group. Her greatest artistic love is plein aire pastel painting. She loves being out in the fresh air! She uses a sanded pastel paper UArt 400, which is of medium roughness. She has begun to use other bases such as Masonite board or foam core that has been painted in an irregular manor, with Pumice Jell by Golden. She likes the spontaneous flashes of brightness and texture that is created by the uneven application of the jell. The foam core is light weight and helps with lessening her load when hauling her materials into the countryside. She is unconcerned with archival longevity and more concerned with using materials that she has on hand. When teaching students how to use pastels, the first thing she does is remove the wrapping papers and break the sticks in half for easier use. She NEVER uses the point of the pastel, only the side edges. She never uses pastel pencils. Her pastels are from a variety of brands and hardness, although she has a preference for soft pastels.



December 5 | Notes courtesy of Betsy Liano

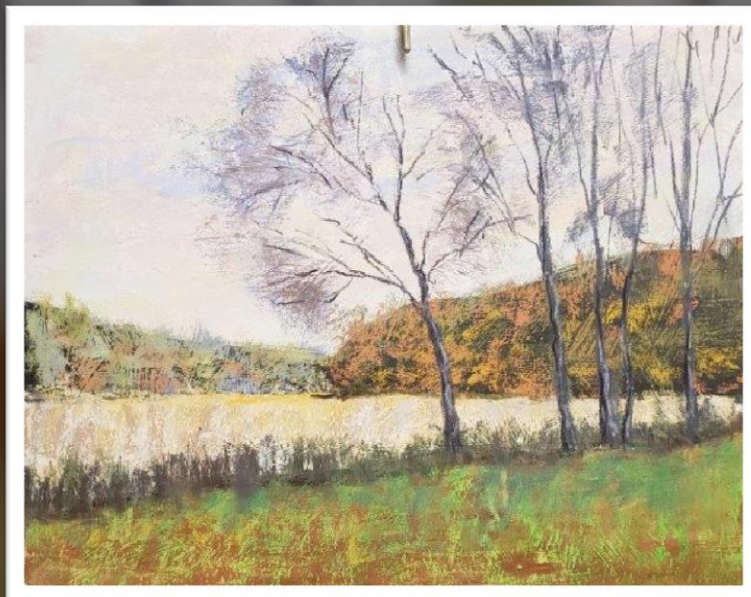
Although she primarily paints outside, she loves using an iPad for reference photos in her class. She selected a landscape which had values that ranged from very dark to very light, and a zigzag flow to the composition. She traditionally works from the top left of the painting across to the top right, then down the right side before moving into the center. Before beginning a painting, Colette applies 'Gloves in a Bottle' to protect herself from any toxic minerals in the pastels. She instructs her students never to blow on the painting and if need be, tap dust into a waste bin to avoid breathing in the pigments. She drew very few basic lines of the composition, using the 1/3 rule for horizontal line placement. She began by laying in a dark (nearly black) under painting to create depth in the wooded hills and a rust complementary color in the grass area. Using rubbing alcohol (50%) on a simple brush, she smeared the under painted pastels to fix them permanently and create a uniformly colored surface. She does not wash or rinse the brush when moving from one color to the next on the under painting while applying the alcohol. One can use water to the same effect, but the alcohol dries much quicker. This technique will NOT work on Canson brand pastel paper. She has a small container to put the colors she is using in her painting, so she isn't searching her palette to relocate a color she has used in a prior section of the painting.



Colette selected a variety of light colors to create the sky (pale blue, pink, peach, yellow, light green, lilac). As long as they are the same value scale, the color is not significant. She applied the colors in a random manner, allowing them to mix on the paper and slightly into the hill area. She created the darker clouds by finishing the sky with a deeper blue. She then began forming the background trees in the wooded hill by pushing green upwards on the hillside and slightly into the sky to create the peaks of the trees. Again, she ONLY uses the side width of the pastel. She added other fall colors into the hillside. For the more distant hillside, she used lighter colors to create the illusion of distance. In the center field, she applied a golden amber which she then intermixed with a light violet to tone it down. She left areas at the bottom area of the field uncovered to give room for the foreground foliage. She applied a bright green to the grass area in the foreground (over the under painted rust color) and mixed other greens by applying both blues and yellows. The rust colored under painting sparkles through the grass. To form stalks of tall grass and reeds, Colette rolls the pastel stick up the surface to create organic and irregular line forms. In some areas she pushed the pastel up into the field to create a deeper boarder between the fore and middle ground areas.

To finish the painting, Colette drew in the prominent trees in the foreground, just focusing on the primary branches. The smaller branches on the outer edge of the trees were created by lightly applying areas of blue violet and a warmer color on top. She finished the tree details with an overlay of even smaller branches to connect to the foundational tree structure.

Colette never uses a blending stick or smudges the pigments with her finger. She doesn't like to crush the colors or smudge them together. She never sprays her paintings with a fixative, because it changes the colors of the pastels. She covers her paintings with a sheet of clear Mylar to protect them until they are framed with a protective glass.



Current Shows

Winter Show - Friendly Home: November 2 thru December 28.

3156 East Avenue | Rochester, NY 14618

Chair: Carol Schott

Judge: Colette Savage

Artwork pickup and show takedown, Saturday, December 28, 9:00-11:00am.

Holiday Show - Pittsford Federal Credit Union: November 18 thru February 10.

1321 Pittsford Mendon Rd, Mendon, NY 14506

Chair: **Liz Sciortino**

Artwork pickup time will be announced in early February 2020.

WELCOME our New Members!

None this month.

Please reach out to your family and friends and invite them to come to one of our shows or monthly meetings and join!

REMINDERS

OUR NEXT MEETING is **Thursday, January 2nd**

The January meeting will be *member playtime*. Betsy Liano will supply materials to create cloth collages a la Lynn Feldman, who presented last year. She will bring cloth, glue sticks, mat board foundations and scissors. If members have their own cloth scissors, they may want to bring them for ease on their hands. She is planning to let people use their imaginations in creating subjects, but some may want to have reference photos to guide them.

GUESTS are more than welcomed and encouraged to join us at our monthly meetings to hear and see what's going on and to watch our wonderful demonstrators. To help with rising costs it would be appreciated if a **\$5.00 donation** was made to the group. If the guest would like to join our group their donation may be applied to their joining fee.

NEWS to share? Please send to **Joe Sirianni**

2019 – 2020 Positions

Executive Board Officers

President	Margaret Mitchell
Vice President	Betsy Liano
Treasurer	Marcia Mundrick
Recording Secretary	Sylvie Culbertson & Tong Wang
Corresponding Secretary	Joe Sirianni

Standing Committees

Membership	Amy Hobert
Program Chair	Betsy Liano
Refreshments	Niesdri Welsh
Rotating Exhibits	Laura Davis
Sunshine	Sylvia Ball
Website Manager	Joe Sirianni
Newsletter	Joe Sirianni

Shows this Season

Winter Show @ **Friendly Home**
Holiday Show @ **Pittsford Federal Credit Union**
Spring Show @ **Pittsford Plaza Barnes & Noble**