



# Pittsford Art Group

Newsletter - February, 2020

## A Message from the President, Margie Mitchell

As April approaches it comes up to the end of the PAG year and board elections are in May. If anyone is interested in a position on the board please contact me or any member of the board.

The Barnes and Noble Spring show has a great turn out. I'm so pleased that everyone responded to the call for paintings. The show looks fabulous!

Please come to our next meeting as we have a few items to discuss with members. Face to face is so much better than emails. We have ideas for the summer and wish to hear your comments and thoughts.

See you at the next meeting on April 2<sup>nd</sup>.

## Rotating Exhibits

January – March

Pittsford Town Hall

Barbara Jablonski

Friendly Home

Carol Schott

Niesdri Welsh

- Memory Care -

Shirley Zimmerkidd

Star P.T.

Betsy Liano

Presbyterian Church

Hiroko Jusko

Pittsford Village Hall

Sylvia Ball

## REMINDER!

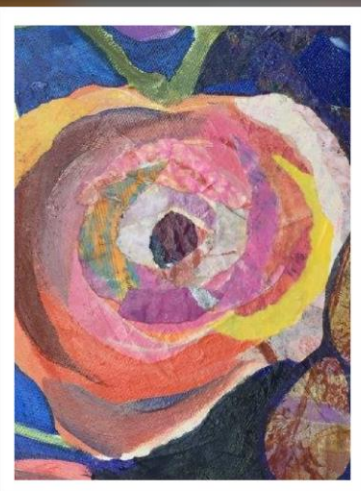
Sylvia Ball will send **occasion appropriate cards** to members or their families. If you know of someone who is ill or a member that has passed, please **email or call Sylvia Ball**.

**February 6, 2020**

Maia (Ethereal Creations) loves to dabble in everything - collage, mixed media, found object art, jewelry, acrylics, etc. She expressed the desire to be good at a couple of things and Collage really speaks to her. She uses unusual items in some of her works, for instance, in the piece Cordelia (Jewel of the sea) the face is painted but includes sea fans, pyrite, shells, and natural things to make up her hair - the final product is varnished and framed w/o glass. Collage allows her to think 'outside the box' and be creative in different ways - she has become a hoarder of items to be used on future artworks and loves it!

For the piece, The Keeper, Maia ordered real butterfly wings off eBay to make up the hair with glued thread, using a heavy viscosity Golden medium. She uses lace, paper, old jewelry, fabric, whatever works.

To create fascinating paper to be used in her collage art she starts with high-end catalogs, like National Geographic magazines (only certain years work) and then applies *Citra Solv Natural Cleaner and Degreaser Concentrate Valencia Orange* to each page and closes the magazine for approximately 10 minutes then opens it and removes the pages to let them dry.





**February 6, 2020**

Monoprinting - Gelli plate - look for Youtube instructional videos. She tends to work from light to dark. Golden fluid acrylics have a transparency and are great to apply over music sheets, old books, letters, coffee filters, leftover Easter egg dye, Dove candy wrappers, cheese cloth (looks like foliage, grass), tea bag tags, lemon/avocado/orange bag (for a grid pattern). She has even used a comb to comb a design into the paper.

Maia shared one of her techniques with the group: she first paints the background on the canvas and then starts to layer on the mixed media papers that she has created. Having the underpainting helps guide her as she puts down different value papers. She likes to use a heavy viscosity gloss medium as a glue to attach items to the canvas and a satin varnish to finish the artwork. Maia uses silicone brushes and spatulas to apply the glue medium. She puts the glue medium on the canvas, places the paper next and then applies the medium on top of the paper as well and smooths it out to remove the extra medium with a silicone spatula. Once it dries she can go back to painting over and around the paper. She tears each paper and never cuts. A typical shape of a tear is a coma shape which is good for floral artwork. Vary the color of each piece to give depth and texture. Your dominant hand will pull up during a tear and the other piece may have a white edge that you could use so be aware of each tear. Each tear is like a paint stroke.

Maia teaches classes and sells her artwork at the *Sylvan Starlight Creations* in Schoen Place, 50 State St. Bldg C, Pittsford, NY 14534



## Rotating Exhibit Updates and News

PAG will discontinue exhibiting at the **Friendly Home Memory Care** unit at the end of March 2020. We will continue to exhibit in the main hall. Contact Darla Greene if you would like to exhibit your artwork in the Memory Care unit.

-----

Sophie Bennett, our contact at **The Village Hall** is celebrating "Arbor Day" with a month-long exhibit in **April**. Contact Sophie ([sbennett@villageofpittsford.com](mailto:sbennett@villageofpittsford.com)) if you wish to exhibit **paintings of trees**. Niesdri will show her solo exhibit in May and June.

-----

**Niesdri Welsh** sold her "Carrots" painting at the Rochester Friendly Home. ONLY three people were interested in her "Carrots". Congratulations Nies!

**Henrietta Art & Garden Party** - No risk show to get exposure for your artwork  
<https://www.henrietta.org/parksandrecreation/page/art-garden-party>

**The Pastel Society of Western New York** presents  
[A Robert K. Carsten Workshop](#)  
"Mastering Mood: The Tonal and Colorist Pastel Landscape"  
July 17-19, 2020

Rochester sculptor and art instructor, **DEJAN PEJOVIC**, will present a slideshow entitled "**Artistic Creativity, Processes, Themes and Trends**" at the Tuesday, March 24, 2020 meeting of the Irondequoit Art Club to be held 7:30 PM at Chapel Oaks, St. Ann's Community, 1550 Portland Ave., Rochester, NY 14621.

**PAG Monthly meetings at Spiegel Community Center** - Please note that members cannot get into the room until 6:30 pm due to the After School program. Please note and arrive closer to 7PM.

## WELCOME our New Members!

**Lischan Chen & Eunchung Kim**

Please reach out to your family and friends and invite them to attend one of our shows or monthly meetings and join!

# ROTATING EXHIBIT Schedule

Venue->	Pittsford Town Hall	Friendly Home <i>Main</i>	Friendly Home <i>Memory Care</i>	Star P.T.	Presbyterian Church	Pittsford Village Hall
# pieces->	10 to 15 medium	22	11	16	3 large, 7 small	10 to 15
Jan-Mar '20	Barbara Jablonski	Carol Schott / Niesdri Welsh	Shirley Zimmerkidd	Betsy Liano	Hiroko Jusko	Sylvia Ball
Apr-Jun '20	Betsy Liano	Margie Mitchell	No longer in rotation	Kathy Wagner	Ann Limbeck	Niesdri Welsh
Jul-Sep '20	Diane Tank	Cathy Schwegler (TBD)	No longer in rotation	Laura Davis	Shirley Zimmerkidd	Ann Limbeck
Oct-Dec '20	Liz Sciortino	Niesdri Welch	No longer in rotation	Sylvie Culbertson	AVAILABLE	AVAILABLE

If you have questions or concerns about this schedule, please contact [Laura Davis](#).

## REMINDERS

### UPCOMING Show

**Spring Show - Pittsford Plaza Barnes and Noble:** March 1-28

**Chair:** [Carol Schott](#)

**Co-Chair:** [Sylvie Culbertson](#)

**OUR NEXT MEETING** is **Thursday, April 2<sup>nd</sup>**

The April general member's meeting features our very own PAG member Cathy Schwegler who will demo watercolor techniques.

**GUESTS** are more than welcomed and encouraged to join us at our monthly meetings to hear and see what's going on and to watch our wonderful demonstrators. To help with rising costs and declining membership, it would be appreciated if a **\$5.00 donation** was made to the group. If the guest would like to join our group then their donation will be applied to their joining fee.

**NEWS to share?** Please email [Joe Sirianni](#)



# **BOARD & Committee Members**

## **2019 – 2020 Positions**

### **Executive Board Officers**

President	Margaret Mitchell
Vice President	Betsy Liano
Treasurer	Marcia Mundrick
Recording Secretary	Sylvie Culbertson & Tong Wang
Corresponding Secretary	Joe Sirianni

### **Standing Committees**

Membership	Amy Hobert
Program Chair	Betsy Liano
Refreshments	Niesdri Welsh
Rotating Exhibits	Laura Davis
Sunshine	Sylvia Ball
Website Manager	Joe Sirianni
Newsletter	Joe Sirianni

### **2019 – 2020 Season Shows**

Winter Show @ **Friendly Home**  
Holiday Show @ **Pittsford Federal Credit Union**  
Spring Show @ **Pittsford Plaza Barnes & Noble**

### **2020 – 2021 Season Shows (under review)**

Fall Show @ **My Sister's Gallery at the Episcopal Home**  
Holiday Show @ **Pittsford Federal Credit Union**  
Spring Show @ **Pittsford Plaza Barnes & Noble**