



# Pittsford Art Group

NEWSLETTER - March - 2021

## A Message from the President, **Margie Mitchell**

Hello to everyone! We are saddened by the loss of our member David Shuttleworth. He was a devoted member of the Art Group. Until he and his wife became ill, David served on the board for a few years and was gracious to offer us his home for Board meetings. Many of us have fond memories of David and our conversations with him. He always found time to volunteer for whatever we needed. He will be missed by all of us that knew him. I sent a letter of condolences from PAG to his wife Karen and family.

We have the following upcoming presenters:

April: [Brent Dodd](#)

May: [Judith Kellerman](#)

June: [Shannon Abbey](#)

I realize I have two animal portrait artists back to back, however each one uses a different medium and style, plus they both paint different subjects. The board and I have discussed and decided to take July and August off for the summer as we have always done in the past and restart in September. We may continue the newsletter but I'll leave that up to Joe if there is enough content to share.

As far as membership goes, we are stable for now until we start meeting again at the Spiegel center. Since we do need to be able to pay our presenters, we'll keep an eye on membership numbers. We currently have 28 active members. It's so nice to have our warmer weather. I've had my window open recently which is inspiring me to get in my chair and paint!

Get ready to Zoom soon!!

## REMINDER!

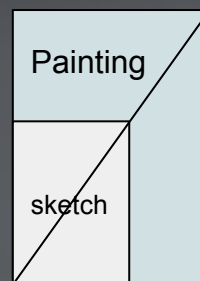
Sylvia Ball will send **occasion appropriate cards** to members or their families. If you know of someone who is ill or a member that has passed, please **email or call Sylvia Ball**.

# Watercolor by Presenter: Nancy Lane



[Nancy Lane](#) enjoys painting in oil and watercolor and has more than 30 years in watercolor and has been an illustrator for picture books with more than 20 books under her belt. Nancy walked our members through her basic watercolor steps and techniques. She enjoys painting landscapes, people and animals and has found plein air watercoloring very challenging, but enjoys it. Tip: You can mix a few drops of gum arabic in clean water to keep the paints from drying. “How do you make your paintings more interesting?” Make the scene a story! What do you love? Focus on the shape of the tree, the texture of the bark, the way the light shines on branches, etc. Pick one! Nancy starts with a picture of a scene and modifies it to make it her own.

Nancy first starts with a value sketch. She draws a very fast sketch with vine charcoal breaking out the highs, lows, and middle values. Remember - white is rarely white!



Her canvas paper is proportional to the final painting. Test: Place your sketch paper on your final painting paper. Draw a line from one corner to the opposite and it should also go through the final painting upper corner in a straight line.

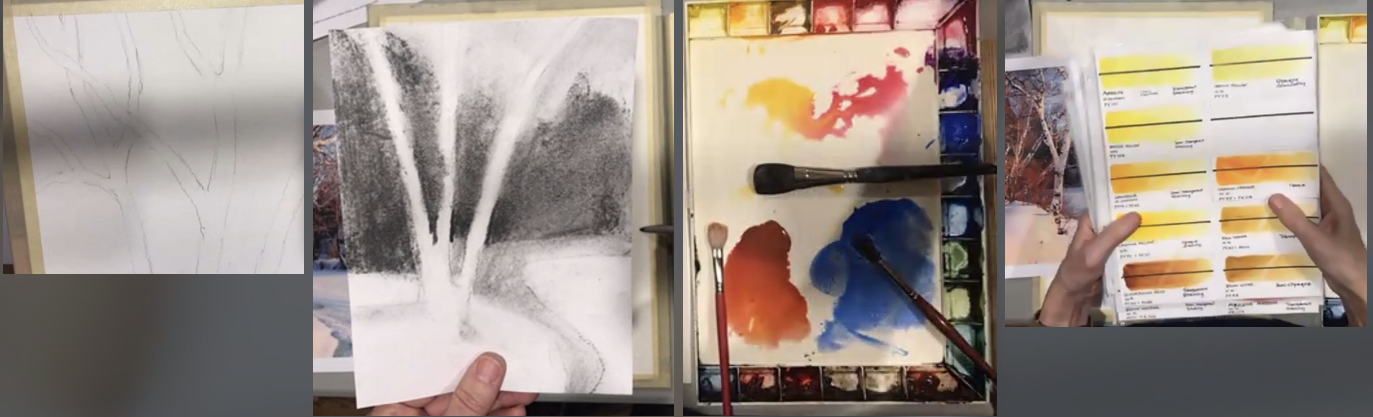
Nancy then smooths the harsh charcoal sketch lines to make the middle values. Charcoal is very forgiving. You can always erase! Good paintings are based on really strong abstract designs! The focal point of this painting is the tree, but in particular, where all the trunks come together with light coming from the right side, it's the widest part of the tree with the lightest light against the darkest dark (contrast), with the sharpest edge, and most color.





## Watercolor by Presenter: Nancy Lane

The next step is to draw a line sketch for the shapes on the canvas paper. She paints from her sketch, not from the reference photograph. She holds the sketch up so it is the size of the final canvas and moves it around to line up the objects on the edge of the paper (tip: close one eye). She then cleans up and removes some of the graphite from the final canvas.



Nancy uses a John Pike palette and 300 lb paper. She compares the photograph with color swatches she has created with her paints. Nancy picked these paints for the demo: Gamboge Yellow, Brown Madder, Blues (French Ultramarine (purple), Thalo (greenish), Cobalt (sky)), Shadow Violet (by Daniel Smith) gray/violet hue, and Quinacridone Rose (very strong). She lays out the colors in a rainbow order and starts painting the light colors - warm yellow/pinks and then on to the sky, snow, and other foreground colors. She uses a test strip and several brushes at once and mixes the colors on the palette before starting to paint. Nancy uses a dropper to add water to the palette instead of dipping the paint brush into water (which dulls the watercolor). She also used a Molotow pump marker to mask red stalks against the dark background.



## Watercolor by Presenter: Nancy Lane

Nancy uses masking tape around the edge of the paper but it is not required for 300 lb paper. She does soak 140lb paper for a few minutes and then stretches and secures to a board. She uses a large brush (at least 2") to put water on the canvas in the areas she will first brush. Nancy then used a big mop brush to force herself to be looser and not so focused on details. She *smushes* her brush (cheap, from Michaels) to allow the hairs to flare out to paint the twigs and grasses around the tree.



She paints with the side of the brush instead of the point of the brush to get feathery, icy, snow edges. It is important that the blue tree shadow goes up the side of the tree. The ground planes that are tilted towards the sun will be yellow/warm. Adding pink to the yellow will make it peach. Once the area around the trees is painted, she then erases the remaining graphite line edges. Nancy then began adding details to the trees and foreground using French Ultramarine and Quinacridone Rose mixed together to create violet. She uses a brush that has a mix of natural and synthetic brush which are cheap, versatile and hold the paint.



## Watercolor by Presenter: Nancy Lane

Nancy works from large to small areas. She wet the background area and then combined the Shadow Violet with Violet to add the dark background color while leaving holes to provide depth. It helps to paint fast and it is more fun - so go for it and use a big brush! Don't fuse over an area and make it look overworked.

She cuts credit cards on an angle and uses the sharp edge to scrape off the top layer of paint to let the bottom layer color show through. You can use old oil brushes to scrub paint off and soften edges. Be careful to not damage the paper. With a credit card edge, she loads the edge with paint and then scrapes it to create the roundness of the trunk - similar to using a palette knife with oil paints. The farther you are from the focal point, the less paint and detail you want to put down. Do not leave hard edges that are distracting from the focal point. Smooth edges to lessen the sharpness and add blue to push farther back. With a rubber cement pickup, Nancy removed the masking fluid to leave clean, white lines. She then filled these in with bright orange (cadmium) to make it pop, since it is in the area of the focal point.



# ROTATING EXHIBIT Schedule

Venue->	Pittsford Town Hall	Friendly Home Main	Friendly Home Memory Care	Star P.T.	Presbyterian Church	Pittsford Village Hall
# pieces->	10 to 15 medium	22	11	16	3 large, 7 small	10 to 15
Apr - Jun '21	Barbara Jablonski	no exhibit	Shirley Zimmerkidd	Sylvie Culbertson	Hiroko Jusko	no exhibit

Due to COVID restrictions, rotating exhibits are on hold with current displays. If you have questions or concerns about this schedule, please contact [Laura Davis](#).

## REMINDERS

### UPCOMING Show TBD

**OUR NEXT Zoom MEETING** is **Thursday, April 1<sup>st</sup>** at 7 pm with presenter **Brent Dodd**. Check the [PAG website](#) for a list of upcoming presenters.

**GUESTS** are welcomed and encouraged to join us at our monthly meetings to hear and see what's going on and to watch our wonderful demonstrators. To help with rising costs and declining membership, it would be appreciated if a **\$5.00 donation** was made to the group for in-person attendance. If the guest would like to join our group then their donation will be applied to their joining fee. During the COVID pandemic, joining one Zoom meeting is free of charge!

### WELCOME our New Members!

Please reach out to your family and friends and invite them to attend one of our shows (tbd) or monthly meetings and join our group!



# Pittsford Art Group on Instagram

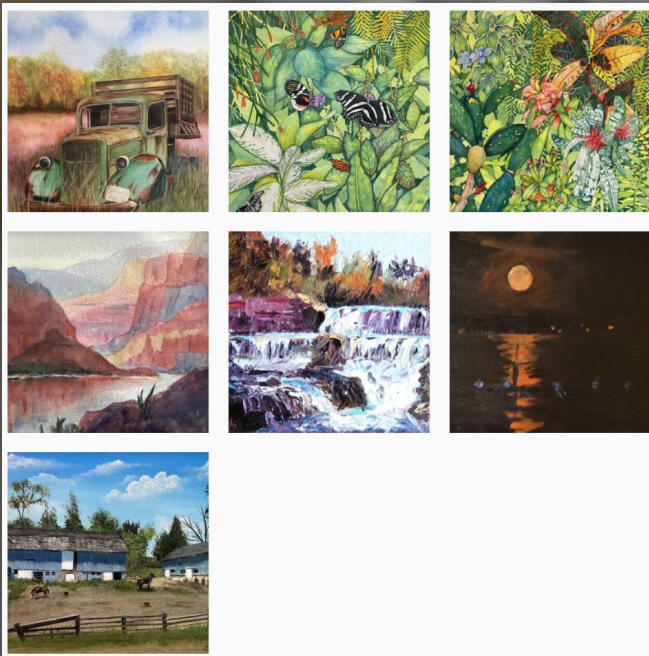
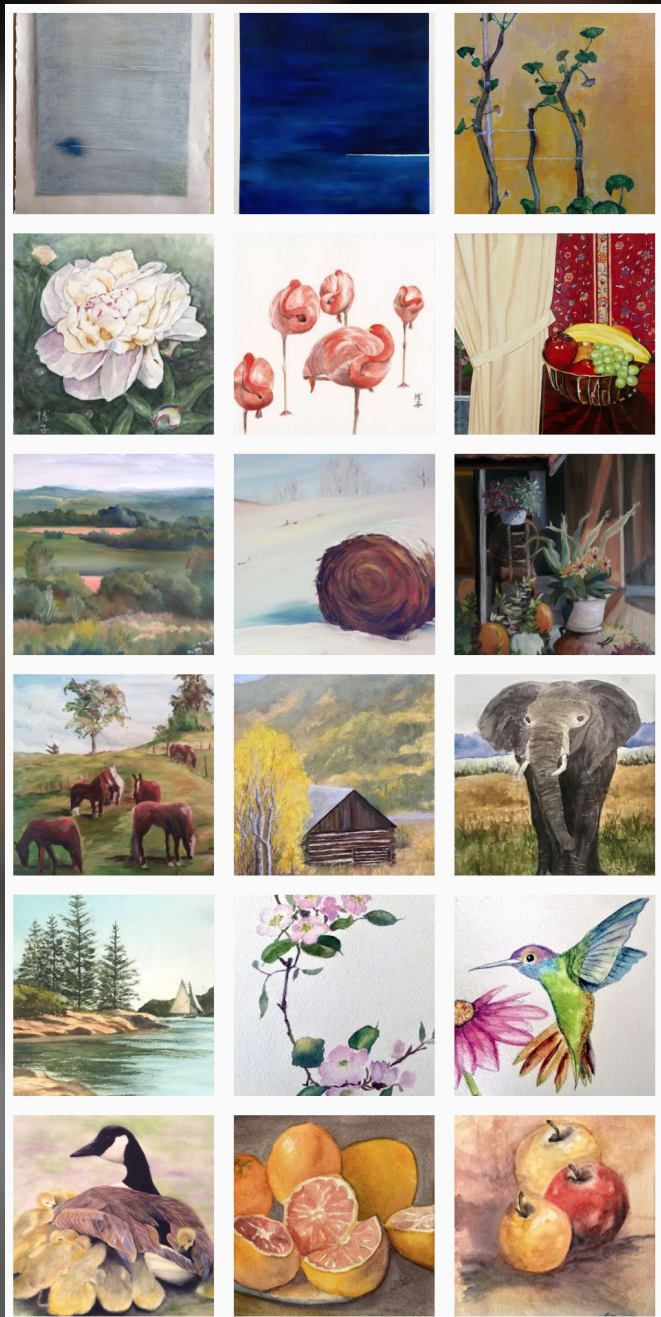
Update of our Instagram page with your paintings - we have **25** posts to-date. Do not worry - your painting is not cropped. The full image shows on the Instagram feed.

We currently have over **100** people/groups following us with several of them "liking" our posted paintings.

If you are interested in displaying your paintings from the PAG account, please send them to Joe as outlined in the email sent to the group.

Have a look!

<https://www.instagram.com/pittsfordartgroup/>



# News

**Barbara Jablonski** is hosting a painting plein air workshop. Check out her [website](#) for details.

Nina pointed out that classes at **MAG** are starting soon - end of April. [Creative Workshop](#)

The **Pittsford Recreation Department** is offering a two-day (June 7-8) "Painting Flowers in Watercolor" [workshop](#) taught by Pittsford Fine Art gallery member **Kathy Armstrong** - Check out all of her upcoming classes [here](#).

The **Pastel Society of Western New York** is hosting **Aline Ordman**, April 30 - May 2 for an online [workshop](#).

**NEWS to share?** Please email **Joe Sirianni**



## BOARD & Committee Members

### 2020 – 2021 Positions

#### Executive Board Officers

President	Margaret Mitchell
Vice President	Betsy Liano
Treasurer	Marcia Mundrick
Recording Secretary	Sylvie Culbertson
Corresponding Secretary	Joe Sirianni

#### Standing Committees

Membership	<b>VACANT - Please volunteer for this needed position!!</b>
Program Chair	Betsy Liano
Refreshments	Niesdri Welsh
Rotating Exhibits	Laura Davis
Sunshine	Sylvia Ball
Website Manager	Joe Sirianni
Newsletter	Joe Sirianni

### 2020 – 2021 Season Shows

TBD