



# Pittsford Art Group

**NEWSLETTER - May - 2021**

## **A Message from the President, Margie Mitchell**

Dear Members,

Hello Everyone. Under normal circumstances we would have had a meeting and reviewed our year and made some decisions for the next year. However, it's been anything but a normal year! We've had some ups and downs, learned how to Zoom and carried on. I am looking forward to our upcoming 2021-2022 season.

On that note, according to our bylaws, dues are payable annually on or before June 30th in order to be included in the Membership Directory and to receive emails and group correspondences. To be eligible for entry in our next show, dues must be paid by September 1st, 2021. You will receive the membership renewal form very soon. We are 27 members strong today and look to grow the membership as we come together again, in-person!

We will resume in-person meetings on September 2nd at The Spiegel Center, (room TBD) with a presenter. Oct 7th we will have Brent Dodd from South Africa return to present via Zoom. He was so impressed with our group that he wanted to come back and paint an African sky landscape for us. November 4th we have Debbie Baker, a very talented watercolor artist.

I wish you all a wonderful summer and remember to paint. I am looking into a show at the Legacy at Clover and Blossom in the fall. They were always so accommodating and we had successful shows there.

We still want to know if you would like to attend a picnic/paint out this July. Please respond to me, Joe and Betsy, letting us know if you are interested. Take care everyone and as always, if you have any questions feel free to contact me.

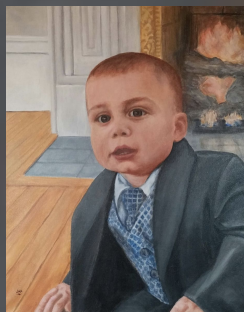
## Acrylic Painting by Presenter: Judy Kellerman

Judy has a BFA from Miami University of Ohio and worked for some advertising agencies. She takes several seminars and keeps practicing her painting skills. Judy puts many paints on throw away palettes to see how the colors interact with each other. She teaches portrait classes and her dog is often the model.

Judy enjoys studying portrait history - lights and darks, expressions, loose, detail, every stroke means something - the hidden essence: Girl with a Pearl Earring (Vermeer) and Mona Lisa (Da Vinci). She recently attended the Van Gogh immersive exhibition (in [Buffalo](#)). Judy started selling pet portraits - she uses many layers and works from photographs submitted through Etsy. She will often project the painting onto a canvas and free-hand the rest as necessary. Judy paints using acrylic. She does not typically paint a background so that the focus is on the pet subject. She paints approximately 7-10 layers letting the paint dry between layers, sometimes overnight. She typically begins with the eyes for pet and people portraits and starts both with the dark areas and the light areas and meets/blends in the middle. It takes many layers to get the hair/fur to look correct on animals.

Judy also has done other portrait commissions including baby, children, adults, and portraits that tell a story. She has also done line art portraits and pets with owners.

Judy transfers a pencil sketch to the canvas and then starts with some washes with a little color. She does not add the background until close to the end of the painting.



## ROTATING EXHIBIT Schedule

| Venue->       | Pittsford Town Hall                   | Friendly Home Main | Friendly Home Memory Care | Star P.T.                             | Presbyterian Church | Pittsford Village Hall |
|---------------|---------------------------------------|--------------------|---------------------------|---------------------------------------|---------------------|------------------------|
| # pieces->    | 10 to 15 medium                       | 22                 | 11                        | 16                                    | 3 large, 7 small    | 10 to 15               |
| Apr - Jun '21 | Barbara Jablonski / Sylvie Culbertson | no exhibit         | Shirley Zimmerkidd        | Sylvie Culbertson / Barbara Jablonski | Laura Davis         | no exhibit             |

Due to COVID restrictions, rotating exhibits are mostly on hold with current displays. If you have questions or concerns about this schedule, please contact [Laura Davis](#).

## REMINDERS

### UPCOMING Show TBD

**OUR NEXT Zoom MEETING** is **Thursday, June 3rd** at 7 pm with presenter [Shannon Abbey](#). Check the [PAG website](#) for a list of upcoming presenters.

**GUESTS** are welcomed and encouraged to join us at our monthly meetings to hear and see what's going on and to watch our wonderful demonstrators. To help with rising costs it would be appreciated if a **\$5.00 donation** was made to the group for in-person attendance. If the guest would like to join our group then their donation will be applied to their joining fee. During the COVID pandemic, joining one Zoom meeting is free of charge!

Sylvia Ball will send **occasion appropriate cards** to members or their families. If you know of someone who is ill or a member that has passed, please **email or call Sylvia Ball**.



**Betsy Liano** has an exhibit featuring spring flowers at **My Sisters Gallery** May 17 through June 27. She is also coordinating a small group show for several members who paint in her classes at St. John's in July.

- Hiroko Jusko, Barbara Horvath, Sylvia Ball, Niesdri Welsh, Laurie Tappel, Betsy Thurnherr, Susan Hodes and Sherry Davis.

---

The **Pittsford Recreation Department** is offering a two-day (June 7-8) "Painting Flowers in Watercolor" [workshop](#) taught by Pittsford Fine Art gallery member **Kathy Armstrong** - Check out all of her upcoming classes [here](#).

---

**Pittsford Fine Art** is sponsoring its second annual "Paint Pittsford!" this summer. Check the website for prospectus and further information: [www.pittsfordfineart.com/events](http://www.pittsfordfineart.com/events)

---

**PAG on Instagram:** <https://www.instagram.com/pittsfordartgroup>



Time to update our content! Please send Joe some new pictures of your work to be posted on our Instagram account.

---

**NEWS to share?** Please email **Joe Sirianni**

# BOARD & Committee Members

## 2020 – 2021 Positions

### Executive Board Officers

|                         |                   |
|-------------------------|-------------------|
| President               | Margaret Mitchell |
| Vice President          | Betsy Liano       |
| Treasurer               | Marcia Mundrick   |
| Recording Secretary     | Sylvie Culbertson |
| Corresponding Secretary | Joe Sirianni      |

### Standing Committees

|                   |  |
|-------------------|--|
| Membership        | <b>VACANT - Please volunteer for this position!!</b> |
| Program Chair     | Betsy Liano  |
| Refreshments      | Niesdri Welsh  |
| Rotating Exhibits | Laura Davis  |
| Sunshine          | Sylvia Ball  |
| Website Manager   | Joe Sirianni   |
| Newsletter        | Joe Sirianni   |

### 2020 – 2021 Season Shows

Cancelled due to pandemic