



Pittsford Art Group

NEWSLETTER - April 2022

A Message from the President

April showers bring May flowers, except we had snow! And, of course, plenty of rain! I don't know about you but I cannot wait for those flowers to bloom. A perfect time to pick up your brushes and create a painting or two!

We have a very nice opportunity to display our work at Paddle and Pour which is coming up quick. May 28th will be here before you know it.



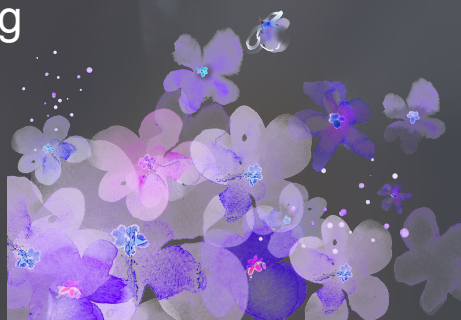
I still need some volunteers to fill in those spaces to relieve me and Betsy as the day goes by. To sign up, see the link to the Google spreadsheet that was previously emailed or drop me a note.

May is our last meeting for this year. We still have our picnic on June 16th (all information will be sent soon).

We are back to our normal schedule, which means no meeting in June, July, or August. September 2022 will be the beginning of the next year. This is also the time to renew your membership for next year and forms will be sent via email by Carol Schott.

Please do your best to attend the last meeting of the year this Thursday, May 5th.

Margie Mitchell



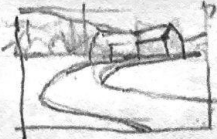
April 2022 Guest Artist - David Gardner

David provided the group an excellent demonstration of watercolor painting. Below is the handout he provided to the attendees. Please find some time to sit back and watch the shared live Zoom recording for all of David's tips and suggestions.


PAINTING PROCESS DB GARDNER

1 TITLE - WHAT IS YOUR PAINTING ABOUT? THE STORY. THIS SHOULD SUPPORT YOUR FOCAL POINT

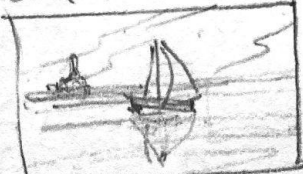
2 COMPOSITION - WHERE/HOW DO YOU PLACE ELEMENTS TO BEST TELL YOUR STORY?



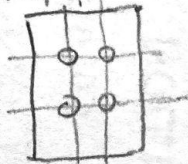
IS THE STORY HORIZONTAL?



IS THE STORY VERTICAL?




HOW SHOULD YOU CROP YOUR STORY TO MAINTAIN YOUR FOCUS




RULE OF 3RDS


3 VALUES - LIGHTS, DARKS, MEDIUMS - WHERE? HOW MUCH OF EA.? FOCUS = LIGHTEST LIGHT WITH DARKEST DARK



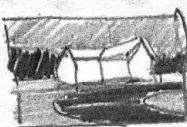
1 MIDDLE
2 DARK
3 LIGHT



1 LIGHT
2 MID
3 DARK

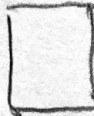


1 DARK
2 MID
3 LIGHT




1 MID
2 DARK
3 LIGHT

4 COLORS - MAKE COLOR CHOICES TO HARMONIZE, TO COMPLIMENT, TO ADD DRAMA, TO REINFORCE




GRAYS
SEPIA
2 COLORS


LMTD. PALETTE




WARM COOL



COMPLIMENTS
WT. OF EA.?



0-B
R-G
Y-P



0-BP
R-GY
Y-PR
OR
YRB

TRIAD

5 DRAWING - FOLLOW YOUR COMPOSITION. MAINTAIN PERSPECTIVE. ACCURATE SHADOWS (WHERE IS THE SUN/LIGHT SOURCE). THINK SHAPES NOT OBJECTS. GUIDELINES NOT INFINITE DETAIL. ENTOURAGE = PEOPLE, CARS, TREES.

6 PAINTING - ALA PRIMA OR LAYERS? LIGHT TO DARK, BIG TO SMALL, TOP TO BOTTOM... MOTHER WASH? KEEP FRESH WITH WATERCOLOR, DON'T OVERWORK. FORGET STYLE JUST PAINT, PAINT, PAINT; IT'LL COME. LOSE PHOTO, PAINT FROM MEMORY & HEART. HAVE FUN! IT'S JUST A PIECE OF PAPER!!



WATERCOLOR
CURTS DEMO →



- PERSPECTIVE
- COMPOSITION

- DEPTH-COLORS, VALUES
- REFLECTION vs. SHADOW

WATER
SKY

EDGES

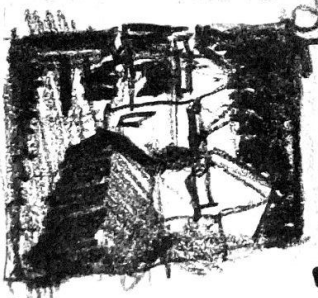
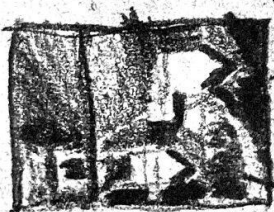
SHAPES

COLOR, COMPLEMENTS

SUN ANGLE/TIME OF DAY

REALITY v. IMPRESSION

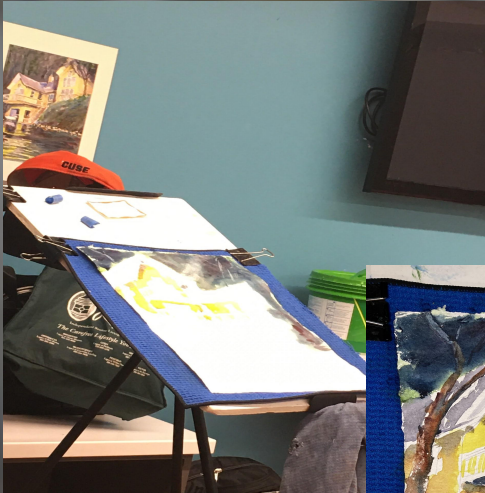
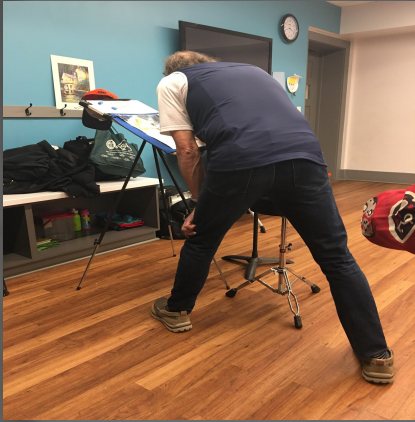
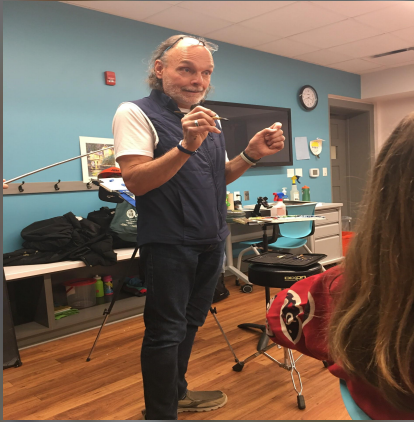
WARM / COOL



April 2022 Guest Artist - David Gardner



April 2022 Guest Artist - David Gardner



ROTATING EXHIBIT Schedule

Venue->	Pittsford Town Hall	Friendly Home Main	Star P.T.	Presbyterian Church
# pieces->	10 to 15 medium	22	16	3 large, 7 small
Apr-Jun '22	Betsy Liano	Joanne Andrews	Hiroko Jusko	Ann Limbeck
Jul-Sep '22	Joanne Andrews	David Gardner	Laura Davis	Hiroko Jusko
Oct-Dec '22	Sarah Hyatt	Ann Limbeck	Dave Gardner	Nies Welsh

If you have questions about this schedule, please contact [Laura Davis](#).

REMINDERS

OUR NEXT MEMBERSHIP MONTHLY MEETING is **May 5th** at 7pm in-person at the Community Center. We will do our best to use Zoom during the meeting for those unable to attend in-person. Check the [PAG website](#) for a list of upcoming presenters.

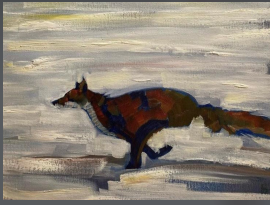
GUESTS are welcomed and encouraged to join us at our monthly meetings to hear and see what's going on and to watch our wonderful demonstrators. To help with rising costs it would be appreciated if a **\$5.00 donation** was made to the group for in-person attendance. If the guest would like to join our group then their donation will be applied to their joining fee.

Sylvia Ball will send **occasion appropriate cards** to members or their families. If you know of someone who is ill or a member that has passed, please contact Sylvia.

WELCOME New Members!

Sarah Hyatt: oil, acrylic, mixed media collage, charcoal

Anne Longo: watercolor, acrylics



PAG currently has 41 members!
Please reach out to friends and acquaintances to join us!

NEWS

Join members for the **PAG** Friday Night Paint Out! All are welcomed. Stop by and do not forget your art supplies! Members have been enjoying gathering to paint together these last few months.

PAG Friday Night Paint Out!
Pittsford Community Center
5/20 in Room 119, 6:30 to 8:30

*****Save the NEW date:** June 16th, 2022 **PAG PICNIC** at Kings Bend Park!

We need you!!! One more Executive Board position needs to be replaced this coming year - **Recording Secretary**. Please contact a Board member today to discuss this position!

Thank you **Laurie Tappel** for volunteering for **Treasurer**! Thanks to Hiroko for stepping up to backfill the treasurer position this past year.

Barbara Jablonski is providing a comprehensive, outdoor, three-day Spring Plein Air Painting workshop, Tuesday, May 17th through Thursday, May 19th. Check out the details on her website:

<http://www.barbarajablonski.com/plein-air-painting-workshop.html>

PAG on Instagram: <https://www.instagram.com/pittsfordartgroup>



Please send Joe some new pictures of your work to be posted on our Website and Instagram account.

Register for the **1000 Islands Plein Air Artist Competition**, Aug 24-27.

Executive Board & Committee Members

2021 – 2022 Positions

Executive Board Officers

President	Margaret Mitchell
Vice President	Betsy Liano
Treasurer	Hiroko Jusko → Laurie Tappel
Recording Secretary	Sylvie Culbertson
Corresponding Secretary	Joe Sirianni

Standing Committees

Membership	Carol Schott
Program Chair	Betsy Liano
Refreshments	Niesdri Welsh
Rotating Exhibits	Laura Davis
Sunshine	Sylvia Ball
Website Manager	Joe Sirianni
Newsletter	Joe Sirianni

Please volunteer
for this position!!!



2021 – 2022 Season Shows

March 2022 (Feb. 27 - April 2): Pittsford Barnes and Noble