



Pittsford Art Group

NEWSLETTER - OCTOBER 2023

A Letter from the Vice President:

Hi PAG members!

October was a busy month for PAG. We kicked it off with speaker Brian O'Neill who provided an amazing demo, and we ended the month finalizing preparations for the November juried show at the Friendly Home.

The good news ... we had great participation at all levels. The meeting with Brian was well attended and he told me afterwards how much he enjoyed our group, the enthusiasm, and the welcoming atmosphere.

Then as we started to prepare for the Friendly Home show, we had a lot of volunteers helping with check in, labeling & ribbons, finances, program, hanging, promotion, and more. It was great to see and very much appreciated. Club meetings, shows, newsletters, and other events would not be possible without the support and assistance of our volunteers. Volunteering is also a great way to engage with people and make new friends – so for all the PAG volunteers, a big thank you!

We also want to thank show judge Kevin Feary. Kevin is very committed to providing meaningful and useful feedback for every painting – so he not only did the judging but is also writing comments on each and every artwork. We will have that feedback to you soon. But be sure to thank Kevin for his work as a judge when he joins us at our meeting on January 4th.

So, thank you all for a great October and hopefully we'll see you at the Friendly Home Show Reception on Saturday Nov 11th.



Pittsford Art Group

NEWSLETTER - OCTOBER 2023

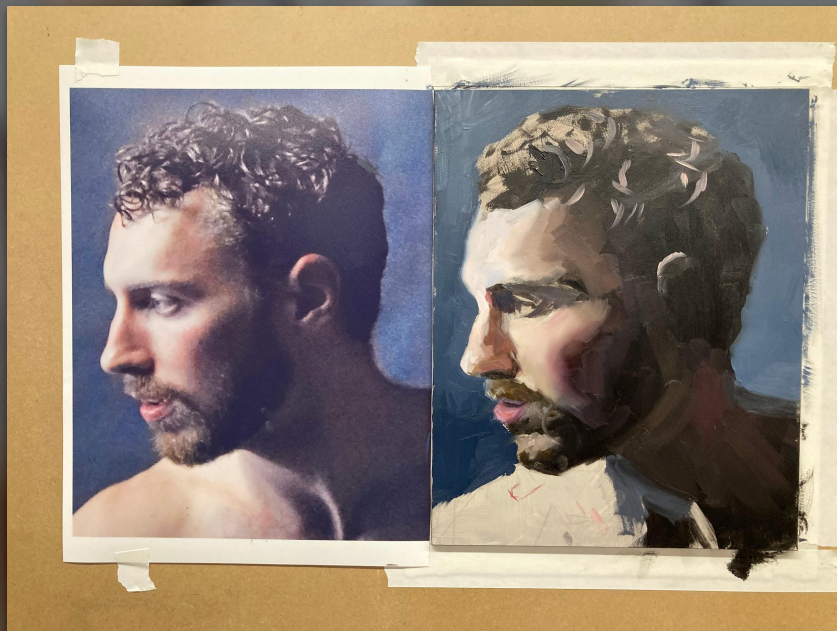
One last thing... the speaker scheduled for December 7th is Dale Terbush. He was the cover artist for American Art Collector magazine last month and you can see more of his work at: <https://www.daleterbushart.com/>. Dale will be presenting via Google Meet (online), and we will have a screen setup and snacks at the Rec Center so we can attend together.

Mike Kamish



OCTOBER 2023 GUEST ARTIST - BRIAN O'NEILL

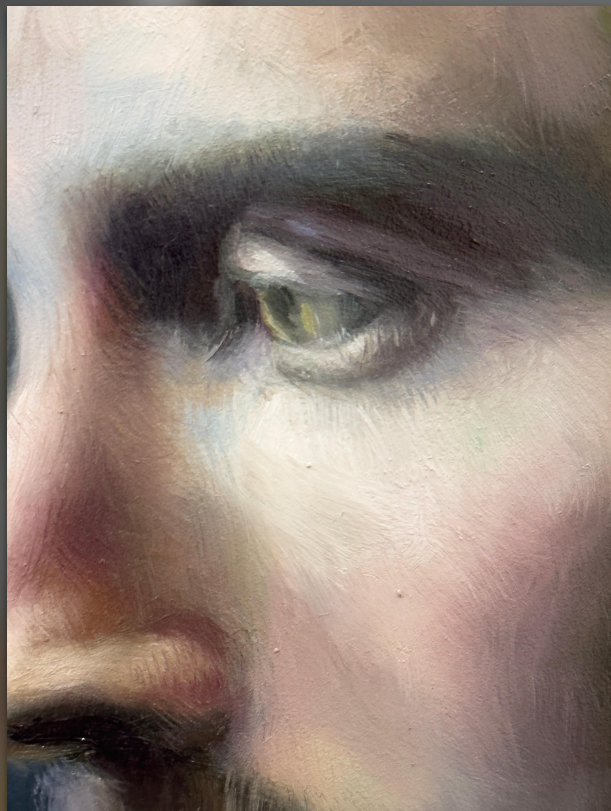
“After a significant amount of time, when you are working in color, you perceive it more realistically”



This meeting was recorded and you can access it with the shared link provided to you via email. Brian's website: [Brian O'Neill Fine Art \(brianeoneillstudio.com\)](http://brianeoneillstudio.com)

OCTOBER 2023 GUEST ARTIST - BRIAN O'NEILL

“As the painting starts to develop. I said it’s objective reporting, and then you get to a point where maybe I want a little violet over here. How much violet? When does it start to become something that could naturally exist? And that becomes a conscious aesthetic decision. It takes temperance and patience. It takes willingness. I’ve learned to embrace those things in the process of painting and creating where I’m asked to be methodical and be thoughtful about my choices. And then there comes a point where I can abandon that a little bit and move more from spirit as opposed to cerebrally.”



This meeting was recorded and you can access it with the shared link provided to you via email. Brian’s website: [Brian O’Neill Fine Art \(brianoneillstudio.com\)](https://www.brianoneillstudio.com)

WELCOME OUR NEW MEMBERS

PAG currently has 54 members!

Neveu, Sharon (October 2023)

Paint-Out DATES

Ann Limbeck has graciously reserved space at the Pittsford Spiegel Rec Center (where we have our meetings) for several PAG open paintings. The time is 6:30 - 9:00pm on Thursdays (but not every Thursday!).

November 9th, Room 18
November 16th, Room 19
December 14th, Room 19



ROTATING EXHIBIT SCHEDULE

Venue->	Pittsford Town Hall	Friendly Home Main	Star P.T.	Presbyterian Church
# pieces->	10 to 15 medium	22	16	3 large, 7 small
Oct - Dec '23	S. Hyatt	H. Jusko	J. Andrews	P. Fahy
Jan- Mar '24	B. Jablonski	C. Schott	L. Davis	S. Simpson
Apr- Jun '24	R. Khan	M. Kamish	S. Zimmerkidd	AVAILABLE
Jul - Sep '24	L. Sciortino/ D. Johnson	S. Zimmerkidd	AVAILABLE	H. Jusko
Oct - Dec 24	R. Boehner	A. Limbeck	K. Herman	AVAILABLE

If you have questions about this schedule, please contact [Laura Davis](#). Remember - you can share any of these exhibit spaces with other members!

REMINDERS

Check the [PAG website](#) for a list of all upcoming events and meetings.

GUESTS interested in joining are welcomed and encouraged to join us at our monthly meetings to hear and see what's going on and to watch our wonderful demonstrators. To help with rising costs it would be appreciated if a **\$5.00 donation** was made to the group for in-person attendance. Any donation amount made will be applied to the joining fee.

Sylvia Ball will send **occasion appropriate cards** to members or their families. If you know of someone who is ill or a member that has passed, please contact Sylvia.

EXECUTIVE BOARD AND COMMITTEE MEMBERS

2023 – 2024 Positions

Executive Board Officers

President	Margaret Mitchell
Vice President	Mike Kamish
Treasurer	Laurie Tappel
Recording Secretary	Carolyn Dey Lobkowicz
Corresponding Secretary	Joe Sirianni

Standing Committees

Membership	Carol Schott
Refreshments	Niesdri Welsh
Rotating Exhibits	Laura Davis
Sunshine	Sylvia Ball
Website	Joe Sirianni
Publicity	Linda Vannozzi

2023 - 2024 Season Shows

Rochester Friendly Home

Monday, Oct. 23, Postmark Deadline Registration form and payment check due
Saturday, Nov. 4, Art Drop Off (9:00 to Noon), hanging after Noon
Saturday, Nov. 4, Judging
Saturday, Nov. 11, Awards Ceremony
Saturday, Dec. 30, Art Pick up (9:00 to Noon)
Judge: Kevin Feary <http://www.kevinfeary.com/>, <https://www.facebook.com/painterkevinfeary/>

Pittsford Barnes and Noble: Pittsford Plaza

March TBD

Paddle and Pour: Pittsford Village

May TBD