



NEWSLETTER – OCTOBER 2024

Letter from the President

Hello everyone, October is a month full of changes. The weather changes, the leaves change, so much beauty all around. The fields have this golden glow with purples, yellow, rust, and reds. I love the colors of autumn. Everyone that attended the meeting saw a fabulous presentation by Betsy Liano. Huge Thank you to Betsy for showing us how to create watercolors with wax! For those that missed the event. I'm sorry we could not record it. However, we can always do it again.

Our fall Juried art show is coming up in just a couple of weeks. Registration closes soon – so make sure you review the prospectus (a copy is in this newsletter) and get your check and information to Debi as soon as possible. You will be able to have up to three paintings. I can't wait to see all the entries! Our judging will take place the day after they are hung by Brian O'Neill so if you haven't started, you best get going and paint!

See you all at the next meeting!

Margie

Letter from the Newsletter Editor

Margie said it all. Autumn is a wonderful time to paint landscapes and to enjoy being outside in the crisp air and wandering around the colorful leaves. We are lucky to have some great parks in our area, so be sure to check them out.

This month our speaker is Elisa Root. She is an artist of many interests and what struck me about her when we talked, is the joy she gets from all types of art – whether acrylics, watercolors, ceramics, and more. It's a good reminder for us all about the joy we get from our art.

Plus, a quick reminder. This is YOUR newsletter. Have you ever wanted to be an author? Want to share a painting with friends? Please contribute images, articles and participate. This is an open forum for all of us!

See you at the Friendly Home Show!

Mike

UPCOMING & CURRENT CLUB EVENTS

PAG November 7th Regular Meeting at The Pittsford Community Center

Speaker: Elisa Root

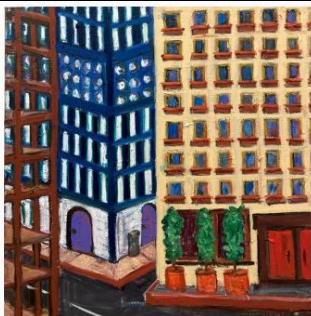


Hi, my name is Elisa Root. I am an artist living and working in Rochester, New York. I work in several mediums, including clay, oil, acrylics, watercolor, and mixed media. I do sculpture and all kinds of things. I have my own kiln, that my husband and I designed and built, for firing large works.

For me, the thing about art is expressing an emotion, an idea, or a feeling in a visual way. Sometimes it is with clay or cement or wood, and sometimes two dimensionally on paper or canvas. The joy (or challenge) of converting the idea is what art is for me. My medium of choice is the one that best meets my vision.

I have a downdraft propane car kiln in my studio in Ovid, NY and a painting studio in an old industrial building that was converted into art studios in Rochester, NY. To contact me, call 585-383-9026.





PAG Paints Pittsford!

PAG Paints Pittsford
Exhibition and Sale

SPIEGEL COMMUNITY CTR
35 LINCOLN AVE
PITTSFORD

SEP 6 -
NOV 7

RM. 206 HALLWAY
DURING OPEN HOURS

OPEN TO THE
PUBLIC

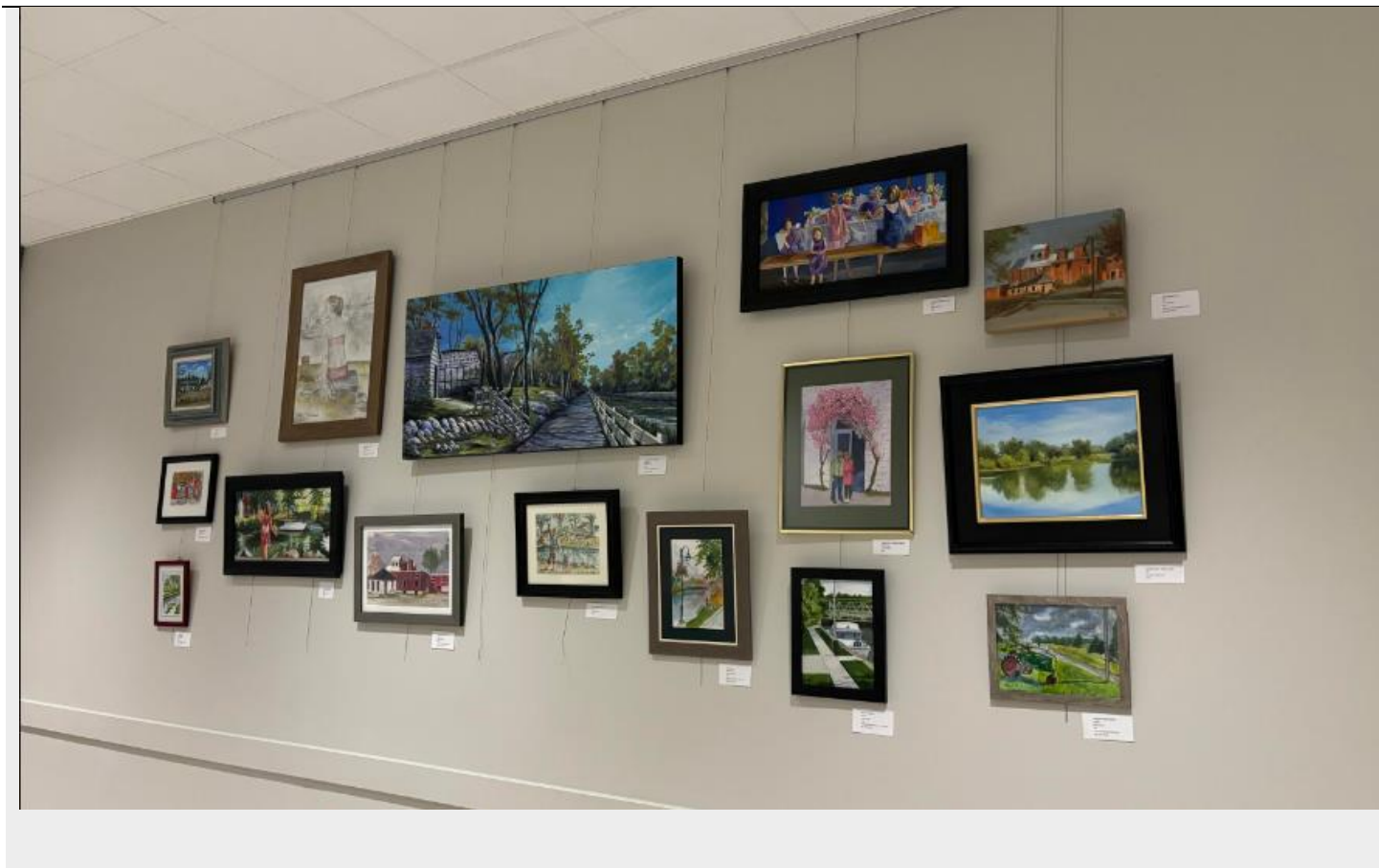
Original art by Ron Bohner

Brought to you by pittsfordartgroup.com and Pittsford Rec

PAG Paints Pittsford is currently on display at the Pittsford Recreation Center.

A big thank you to Ron Bohner for sharing his Plein Air artwork (created on a recent PAG Plein Air event) for the advertisement and to Linda Vannozzi for championing this event.

Also thank you to Debi Bloom, Karin Wallin, Maryanna Mueller, and Ron Bohner for setting up and arranging the paintings. Stop to see them when you are at the Rec Center for our next meeting!



PAG Juried Show at the Friendly Home NOVEMBER & DECEMBER

It's almost here! The first juried show of the season at the Friendly Home. Click the following links to enter your painting names and to sign up to be a volunteer:

PAINTING REGISTRATION SHEET: [Artist Sign-Up](#)

VOLUNTER SIGNUP: [Volunteer Form](#)

Details

Location	The Rochester Friendly Home 3156 East Ave. Rochester, NY 14618
Co-Chairs	Seeking Volunteers
Registration Dates	Registration opens immediately and runs until Saturday, October 21st. All entries must be postmarked and paid for by that date.
Art Dropoff	Friday November 1st, between 9:00AM and Noon. If timing is an issue, contact the Co-Chairs so that we can try to help you with alternative arrangements.
Art Judging & Hanging	Saturday November 2nd, starting afternoon.
Show Open to the Public	Sunday, November 3rd through TBD, 9:00am to 5:00pm
Awards Ceremony and Reception	Saturday, November 16th, 11:00 AM
Art Pickup	Monday December 30th, between 9:00AM and Noon
# and Cost of Entries	3 entries per paid member. The entry fee is \$5/painting.
Judge	Brian O'Neill
Awards	1 Best of Show, 1 Body of Work, 6 Juror awards and 6 Merit awards, 1 People's Choice
Eligibility	<ul style="list-style-type: none"> You <u>must have paid your annual dues</u> or be an honorary member of PAG. Your art must be <u>original</u> and painted after 2020. Mechanical reproductions, photography, crafts, and sculpture in the round are not eligible. Artwork previously entered and accepted into a PAG juried show is not eligible. All artworks must be properly framed and no larger than 36 x 36 inches. Acceptance of any submitted artwork is at the discretion of PAG Leadership and the Show Judge. All decisions are final. All accepted artworks must hang for the duration of the show. All paintings must be dry to the touch.
Payment	Checks to be sent to Treasurer Debi Bloom along with Prospectus with painting names, medium, and prices. Watch your email for details and deadline for submission.

To see the award winning paintings from last year's show, click this link: <https://pittsfordartgroup.com/show-highlights/2023-friendly-home-november/> or scroll to the next page.

This Year's Judge: Brian O'Neill

Check out Brian's work at <https://www.brianoneillstudio.com/>



Brian O'Neill's work has been showcased in galleries across the U.S, Canada, Japan and England. O'Neill is a graduate of The Ani Art Academy apprenticeship program where he studied under the guidance of acclaimed realism painter Anthony Waichulis.

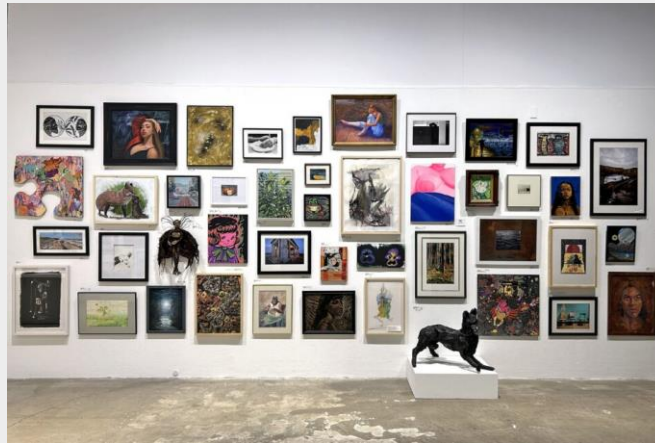
Brian has also been an invited speaker for the world-famous Pittsford Art Group!

Last year's Friendly Home award winners:



UPCOMING RELATED EVENTS

Save The Date: Rochester Contemporary Art Center 34th Annual Members Exhibition



We have another great opportunity to show your art -----at RoCo during our 34th Annual Members Exhibition!

Artwork Drop-off days are Nov. 8, 12-9pm, Nov. 9 & 10, 12-6pm.

All artistic media are welcome with maximum dimensions of 2D: 32" x 32" and 3D: 24" x 24" x 24".

Artwork must be delivered ready to hang, framed, and wired.

Artists shipping their artworks need to provide return shipping

All entries will be exhibited and be eligible for numerous awards.

Artworks may be offered for sale. RoCo charges a small 25% commission on purchased works.

Join to participate or renew your membership. Memberships must be current through February 2025, which is the end of the exhibition. We look forward to exhibiting your artwork this winter! For more details, contact:

Emily Gammon
137 East Ave, Rochester, NY 14604
(585) 461-2222
rochestercontemporary.org
info@rochestercontemporary.org

NEW MEMBERS

Please Welcome Sue Deacon!

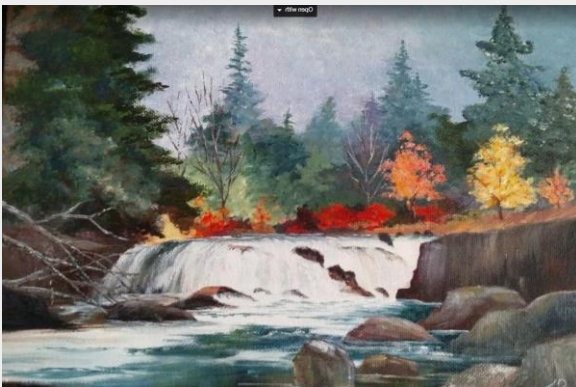


I started taking art lessons about 20 years ago. I started out using oil paints and then switched to acrylics. After a few years my art instructor asked if I would like to start teaching art. She introduced me to Watercolors, Pastels, and Colored Pencils so that I could help teach the children that took lessons from her.

After a year of helping her teach the kids, she decided to move out of state. She offered me her art studio business in Spencerport, NY. I offered art classes for: kids ages 8-18, adults, and homeschooled children. I did that for a few years but closed the studio when my parents started needing help as they aged.

I continued taking a few acrylic and watercolor classes over the years but have not done much art. I joined the Pittsford Art Group so I could attend the meetings and experience the art demonstrations. I'm hoping to start doing more art moving forward.

Here are a few examples of my art.



Please Welcome Marion Haley!

Please welcome Marion – a new artist to the group. More details soon!

OTHER REMINDERS

Check the PAG website for a list of all upcoming events and meetings. <https://pittsfordartgroup.com/>

Guest Policy

GUESTS interested in joining are welcomed and encouraged to join us at our monthly meetings to hear and see what's going on and to watch our wonderful demonstrators. To help with rising costs it would be appreciated if a \$5.00 donation was made to the group for in-person attendance. Any donation amount made will be applied to the joining fee.

Sunshine Committee

Sylvia Ball will send occasion appropriate cards to members or their families. If you know of someone who is ill or a member that has passed, please contact Sylvia.

ROTATING EXHIBITS

The rotating exhibits are an opportunity for members to display their work at various locations around town. If you have questions about this schedule, please contact **Laura Davis**. Remember - you can share any of these exhibit spaces with other members!

Venue->	Pittsford Town Hall	Friendly Home Main	Star P.T.	Presbyterian Church
# pieces->	10 to 15 medium	22	16	3 large, 7 small
Oct - Dec '23	S. Hyatt	H. Jusko	J. Andrews	P. Fahy
Jan- Mar '24	B. Jablonski	C. Schott	L. Davis	S. Simpson
Apr- Jun '24	R. Khan	M. Kamish	S. Zimmerkidd	L. Vannozzi
Jul - Sep '24	L. Sciortino/ D. Johnson	S. Zimmerkidd	S. Culbertson	H. Jusko
Oct - Dec 24	R. Boehner	A. Limbeck	K. Herman	N. Varon

CLUB LEADERSHIP 2024 – 2025 Positions

Current Positions

Executive Board Officers

- President, Margaret Mitchell
- Vice-President, Mike Kamish
- Treasurer, Debi Bloom
- Recording Secretary, Carolyn Dey Lobkowicz
- Corresponding Secretary, Joe Sirianni

Standing Committees

- Membership, Carol Schott
- Refreshments, Paula Fahey
- Rotating Exhibits, Laura Davis
- Sunshine, Sylvia Ball
- Website, Joe Sirianni
- Publicity, Linda Vannozzi
- Newsletter, Mike Kamish
- Speakers, Margie Mitchell & Mike Kamish

Open Positions

We are now seeking new Board and Committee Members to replace leaders that have been at it for years. This is your club – please be part of it by participating on the Board or a Committee. Open positions are listed below. Current leaders will “show you the ropes” so we can make this very easy. Everyone who has participated in this way says they get a lot more out of the club – and make new friends – when they actively participate in this way. Please participate!

Open Executive Board Officers

- Recording Secretary
- Corresponding Secretary

Standing Committees

- Website
- Speakers

RECENT EVENTS

October Meeting with Presenter Betsy Liano

The club was lucky to have one of our foremost members as Presenter this past month. Betsy is a long-time leader, participant, and advocate for the club, and we are lucky to have her. That was especially true last month where Betsy presented a session on Watercolor Batik.



Betsy was kind enough to share a written explanation of her technique and provide some advice for others that wish to try creating new art in this way.



I will give you a rough step by step process of making a watercolor batik.

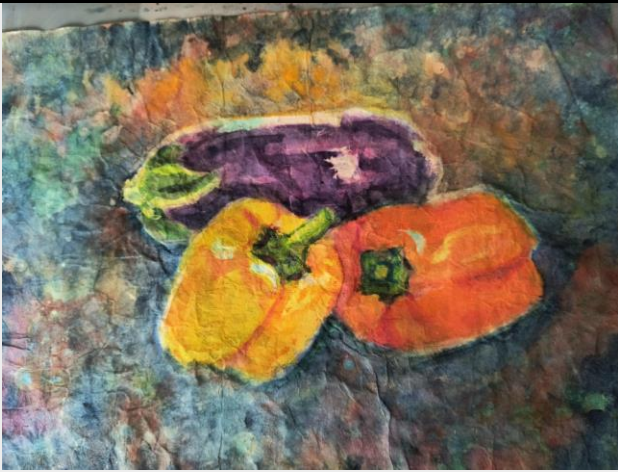
I started with a pre-tinted rice paper.

Lightly draw the subject onto the rice paper.

Using melted paraffin and your old brush (They will be forever ruined for anything but wax from here onward!) preserve any areas you want to remain white.

A brush that is too small will not allow enough time to transfer wax to the paper before it hardens.

Next, paint your lightest values, in my case yellow on the pepper, and light-yellow green on the stems.



Dry the painted areas with a blow dryer. Then apply more wax to preserve these values.

Continue working the painting in this manner, adding more intensity of watercolor paint, dry thoroughly, and then adding more wax to preserve subsequent value layers.

I saved the negative space for last. I did add several layers of paint before splashing the painting with random drops of wax.

When the painting is saturated with new paint, close to the final stages, ball up the rice paper into a tight ball to form creases in the painting.

You can add more dark values into areas that may have been exposed by the cracked wax.

The final stage is to iron out the wax between layers of newspaper to absorb the wax. I use an old iron that my family used for waxing skis. Again, like with your brushes, do not use your best iron! Change out the paper as needed.

You may want to place some clean paper towels WITHOUT embossed designs to keep the painting clean from ink

Once this is complete you can add more color to enhance areas. Other artists have used color pencils, watercolor pencils or crayons, or just more watercolor paint.

Warning:

It is recommended to use natural bristle brushes vs synthetic. If you are the type of artist who leaves brushes in the water container as a habit THIS WARNING IS FOR YOU. The synthetic brushes can melt too

Please open a window for ventilation.

Be mindful paraffin is flammable so take caution that it doesn't get too hot.

The last time we did this, we used an old fryer filled with water and the wax was melted inside a can in the middle of the water. Maybe you can find one of these ancient appliances at Goodwill or a yard sale. I used a donated fondue pot (thank you Hiroko!) it will never be useful for food again, but it has been so fun to play with this technique

The first photo is of plain tinted rice paper. The second is the final product. I have also included the eggplant trio prototype I painted at home to practice.

Betsy Liano



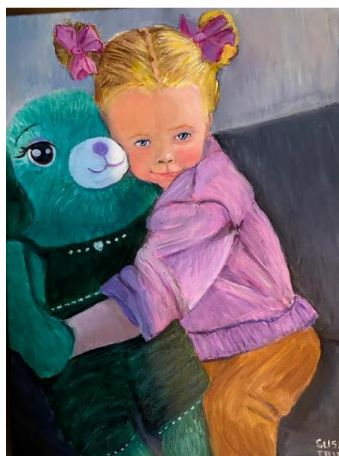
MEETING NOTES – General Meeting 10/3/2024

**Pittsford Art Group
General Meeting
Spiegel Community Center
35 Lincoln Avenue
Pittsford, NY 14534**

The meeting was held on 10/3/2024. Attendance was light due to a religious holiday that evening. Prior notes were accepted, and the business portion of the meeting was concluded, and was followed by a presentation by speaker Betsy Liano.

MEMBER NEWS

Here is a sampling of new images uploaded to the PAG web site. Be sure to go to the web site to see all of the new photos! <https://pittsfordartgroup.com/>



UPCOMING COMMUNITY COURSES & EVENTS

Will you be offering or attending any classes? Is there an art show coming up that may be interesting to remember? Let us know and we can share the information with the club.

ARTICLES OF INTEREST

Have any articles to share with the group?

Here is one that caught my eye this week on ArtNet News:

<https://news.artnet.com/art-world/lam-museum-accidentally-throws-out-alexandre-lavet-artwork-2546229>

Museum Elevator Technician Accidentally Throws Out Alexandre Lavet Artwork

Oops, those were Alexandre Lavet's hand-painted
beer cans.

