



## NEWSLETTER – February 2025

---

### **Letter from the President**

Hello Everyone,

It's cold and chilly snowy and windy outside, but inside we were all enjoying ourselves with our presenter learning how to do Encaustics. With so many steps and the fun and realization of what you get in the end, adding wax and heat to colors, lots of fun was had by all! It was so nice of the presenter, Pat DeLuca, to bring everything that she needed for the presentation, plus the little canvases for all of us, so that we could enjoy it too! Some of our work is going to be in the newsletter as well! I am looking forward to all the new paintings at our upcoming juried show at Barnes and Noble!

Margaret Mitchell

### **Letter from the Newsletter Editor**

Hi PAG members,

I can't believe another month has gone by! I just got back from a trip to the big Tucson Hem and Mineral Show, none other than Tucson! I'm sorry to say that it caused me to miss Pat DeLuca's wonderful presentation – but I did enjoy seeing a whole different category of art ... art made of fossils and rocks and minerals and precious gemstones. For example, this kind of "artwork" from Green River Fossil Company (<https://www.greenriverfossil.com/>) that was really unique and fun to see ... and very expensive!



But is it art? That's a question people are asking about AI (Artificial Intelligence) generated art as well. Checkout the "Topic of the Day" at the end of the newsletter and share with me what you think makes up "Real" Art and if you think AI (or fossils) can be or should be considered art.

I'd be very interested to hear what you think!

Mike

## UPCOMING & CURRENT CLUB EVENTS

**PAG March 6th Regular Meeting at The Pittsford Community Center**

**Speaker: Our own Award-Winning Member – Sylvie Culbertson**



Born and educated in England, my earliest exposure to art came from my parents. We lived a short bus ride from the National Gallery in London and my dad took me and my sister there on Sunday afternoons and he showed us his favorites, one of which was a treasure from WWII, an album of miniature paintings of Italy. My father never painted until I asked him to contribute to my autograph book for my school friends. He asked for my paintbox and brush and promptly created a painting of the tall ship, The Golden Hind, which appeared on a brass plate hanging by his chair. It was a valued gift and to this day, is framed in my living room. My mother also had an interest in art and often said she wished she could have found time to paint as a living, but that long ago with no training it was not possible.

For me, my interest evolved over time. I remember enjoying art classes but did not pursue that interest until much later in life when I was married with a house with empty walls. Thinking back to childhood and a tiny painting done by my dad and of sketches by my mother, I decided I would paint my own pictures – but soon realized that I needed help. Fast forward many years and I am a product of The Creative Workshop at The Memorial Art Gallery where I took classes over about 50 years. Wendy Gwirtzman was the first teacher and GA Sheller was a great help with drawing. I have never stopped taking classes.

I chose watercolor to work with as it was always beautiful to look at and I am still looking for that beauty and to capture it on canvas.



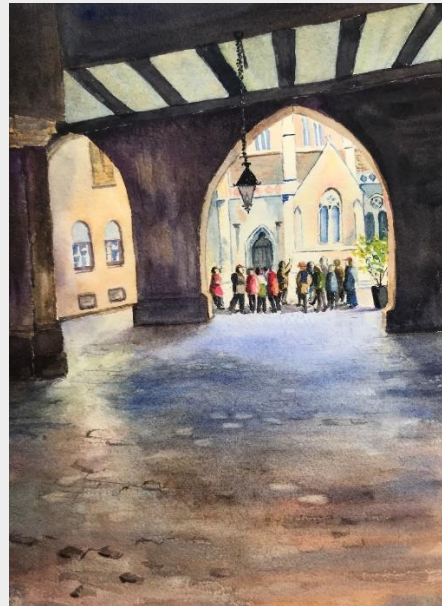
My journey to the USA was an adventure. I left England with a girlfriend and her aunt and after a stay in Toronto, ended up in NYC, where I quickly got a secretarial job. As much as I could, I saved my earnings for bus trips across the USA, where I recorded everything that I saw in “artistic” photos for our albums. 5 years later with a job waiting for me at Nestles in Switzerland, I chose instead, to marry my husband, Jim. Jim and I have been on many exciting trips. Over time, photography gave way to sketching – and as a result I have a dozen or so travel sketchbooks with vivid memories attached, and they are my much-used source of inspiration.

Why did I leave England? In the late 50s it was hard to earn money as a secretary, I earned L6.50, a week. Over half went to the government, L2 to my parents, and the rest for the bus to work etc. Many people were emigrating to Canada or Australia so a trip with a friend was not scary. L1 = \$5.00 at that time and was good value. Yes, my parents were upset. My two sisters and brother understood and did not complain. I am happy with my decision.

Now that I focus on painting and we have the space, I have been able to take over a spare bedroom in our house as my studio. So, the space is nice, and I only wish I had more time to be there.

I have a sister-in-law (Janet) who died in October and left 600 large paintings and her legacy to be looked after – a big headache for the family. I am warned – I need to start cleaning out. **Any ideas?**

Samples of Sylvie’s beautiful work:





## NEXT SHOW @ Barnes & Noble Starting Sunday March 2<sup>nd</sup>!

The next big group show is at Barnes & Noble in the spring. Debi & Mike have chaired the last few shows with the assistance of

- Joanne (wall cards)
- Nina (prospectus)
- Sylvia & Margie (Certificates)
- Debi (also Ribbons in addition to being co-chair)

Plus, multiple volunteers for setup, takedown, and the award reception.

We're all willing to help again – but the same folks have coordinated the past several shows and as a membership group is only fair that everyone pitches in to help – so let's get a few new volunteers for these roles for future shows:

### Chairperson

- **Show Preparation**
  - Confirm show dates with Barnes and Noble coordinator and determine with the coordinator what we need for the reception (its usually the store manager who confirms the dates – a super nice guy)
  - Identify a judge (this is the most challenging item but also can be a lot of fun too). In previous years we:
    - Looked at local clubs and galleries and identified some well-respected artists as candidates
    - Reached out to the top candidates – and in each case they said “yes”.
    - We then confirmed dates and expectations and had our judge.
  - Prepare the prospectus by copying the old one and updating it with:
    - Show dates, drop off and pick up times, reception date, the Judge, and other changes as needed
  - The Secretary (currently Joe but hopefully another soon) will send out the Prospectus and create a blank paintings document on the Google shared drive.
- **Artwork Submissions Stage**
  - As Chair you will answer any questions and assist people as needed to enter their submissions and direct them to send payment to Margie Mitchell.
  - Once the final submission date is reached, the Chair will provide the submissions to the person creating the Wall Cards (now JoAnne) and the person creating the show booklet (now Nina).
  - The Chair will also collect names of volunteers for inclusion in the show booklet and do the work of hanging and preparing for the show and cleaning up after.
- **Judgment Day**
  - On the day of Judging, the Chair will meet the Judge at B&N to get them oriented and then when the judging is complete, will give the Judge their payment and guard the secret list of winners and get it to Sylvia for Certificates.
  - When the Judge finishes their critiques, the Chair will refine the document for distribution after the awards are given out.
- **Awards Reception**
  - At the Award reception, the Chairs will assist in giving out the certificates.
- **End of Show**
  - The Chairs will assist with take-down and clean up and then make sure that the exhibit area is left ready for the next show.

### Setup and Checkin Volunteers

#### Reception volunteers

#### Take down volunteers

- A link to the Volunteer sheet is included in your Prospectus.

## RECENT EVENTS: February Speaker

### Pat Deluca



Pat Deluca is an encaustic artist. For those of you unfamiliar, encaustic painting, also known as hot wax painting, is a form of painting that involves a heated wax medium to which colored pigments have been added. The molten mix is applied to a surface—usually prepared wood, though canvas and other materials are sometimes used.

Unlike an oil painter, water colorist, or acrylic painter who mix colors on a palette. In contrast, the “palette” of an encaustic artist is a hot plate, the “colors” are pigmented encaustic.

Another difference between encaustic and traditional painting is that encaustic paintings have many layers of encaustic applied to the surface, one on top of the other, with each layer being separately fused in. This technique results in a depth and luminous translucency that is unique to encaustic art.

Pat demonstrated the encaustic techniques to our club – and even better – she helped each of the attendees create their own encaustic! We include several of them in the pages that follow.

Here are a few photos from the evening event:





Here are some of the attendee creations!

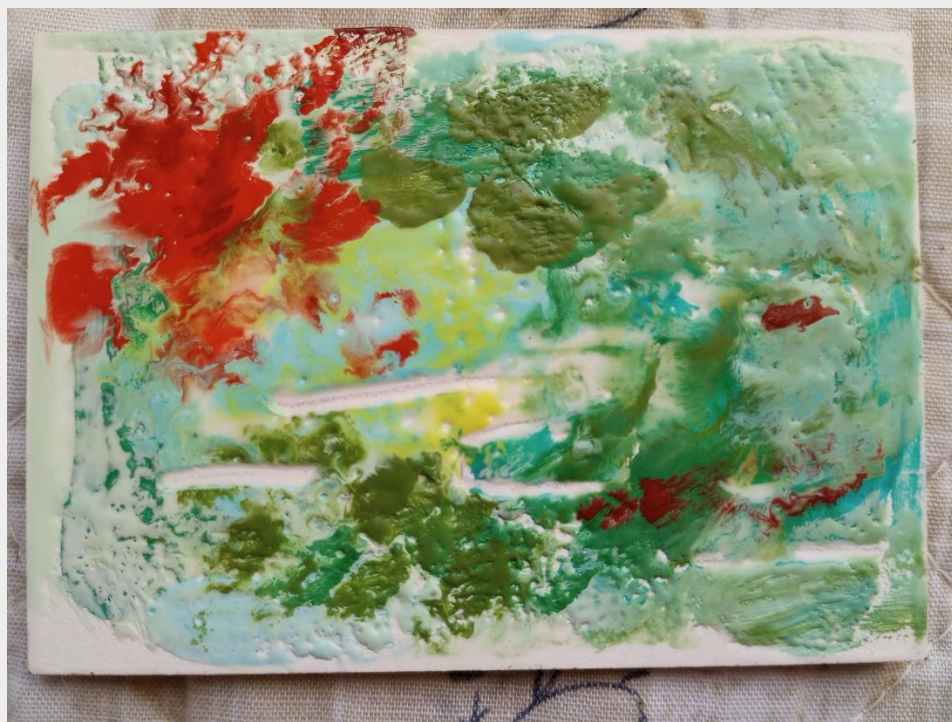


Betsy Liano



Carolyn Lobkowitz





Hiroko Jusko



Joe Sirianni



MaryAnn Meuller



Katherine Herman





JoAnne Andrews



Margie Mitchell



Great Job Everyone!



## ROTATING EXHIBITS

The rotating exhibits are an opportunity for members to display their work at various locations around town.

If you have questions about this schedule, please contact **Laura Davis**. Remember - you can share any of these exhibit spaces with other members!

	Town Hall	Friendly Home	Star P.T.	Presbyterian Church
Jan - March	Barbara Jablonski	Debbie Ingerick	Paula Fahy	Katherine Herman
April - June	Sylvie Culbertson	Niesdri Walsh	Denise Johnson	Laura Davis
July - Sept	Debi Bloom	Margaret Mitchell	Sylvie Culbertson	
Oct - Dec	Ann Limbeck		Ron Boehner	Karin Wallin

## OTHER REMINDERS

Check the PAG website for a list of all upcoming events and meetings. <https://pittsfordartgroup.com/>

### Guest Policy

GUESTS interested in joining are welcomed and encouraged to join us at our monthly meetings to hear and see what is going on and to watch our wonderful demonstrators. Please let Carol Schott or Margie Mitchell know of any guests in advance so that we can welcome them to the meeting.

### Sunshine Committee

Sylvia Ball will send occasion-appropriate cards to members or their families. If you know of someone who is ill or a member that has passed, please contact Sylvia.

## CLUB LEADERSHIP 2024 – 2025 Positions

### Current Positions

#### Executive Board Officers

- President, Margaret Mitchell
- Vice-President, Mike Kamish
- Treasurer, Debi Bloom
- Recording Secretary, Carolyn Dey Lobkowicz
- Corresponding Secretary, Joe Sirianni

#### Standing Committees

- Membership, Carol Schott & Maryanna Meuller
- Refreshments, Paula Fahey
- Rotating Exhibits, Laura Davis
- Sunshine, Sylvia Ball
- Website, Joe Sirianni
- Publicity, Linda Vannozzi
- Newsletter, Mike Kamish
- Speakers, Margie Mitchell & Mike Kamish

### Open Positions

We are now seeking new Board and Committee Members to replace leaders that have been at it for years. This is your club – please be part of it by participating on the Board or a Committee. Open positions are listed below. Current leaders will “show you the ropes” so we can make this very easy. Everyone who has participated in this way says they get a lot more out of the club – and make new friends – when they actively participate in this way. Please participate!

#### Open Executive Board Officers

- Recording Secretary
- Corresponding Secretary

#### Standing Committees

- Website
- Speakers

#### Description of positions:

**Corresponding secretary** - To receive all outgoing information from members and the board to be sent to members. Any information for the group as a whole is only to be shared through this person.

**Recording Secretary** - To attend all members meetings at Spiegel center and record all Business meetings and presenters' information as well as meetings with the Board.

**Presenters committee** - This volunteer position can be held by up to 3 members. To find new and interesting presenters for general meetings and the picnic.

**Website Manager** - To update our website and add new information as it becomes available.



## MEETING NOTES – General Meeting 2/6/2025

**Pittsford Art Group  
General Meeting  
Spiegel Community Center  
35 Lincoln Avenue  
Pittsford, NY 14534**

Sixteen PAG members met at the Spiegel Center for the February General Meeting; Barbara Jablonski, Debi Bloom, Denise Johnson, Sharon Neveu, and Ted Horvath joined us online.

Board members present were Margie Mitchell, President; Joe Sirianni, Corresponding Secretary; and Carolyn Lobkowitz, Recording Secretary.

### Guests

A guest who has recently retired from 20 years at the Brighton Public Library joined us. She has worked in watercolor in the past and plans to restart that journey which was put on hold for work and family.

### Business

Margie reported on behalf of our Treasurer, who is away, that there have been no significant budget changes from the previous month.

Joe reminded us that the Barnes and Noble Prospectus is online and that you will find two links at the end of the Prospectus, one to enter your information for the show and the second link will take you to a volunteer signup sheet.

Laura Davis, Community Rotating Exhibits, announced one open spot for the 3rd quarter at the Presbyterian Church and that spot has now been filled.

Carol Shott requested help with Membership and Maryanna Mueller volunteered.

The business meeting adjourned at 7:12 pm and we turned the floor over to our presenter, Pat DeLuca, for her presentation on encaustic painting.

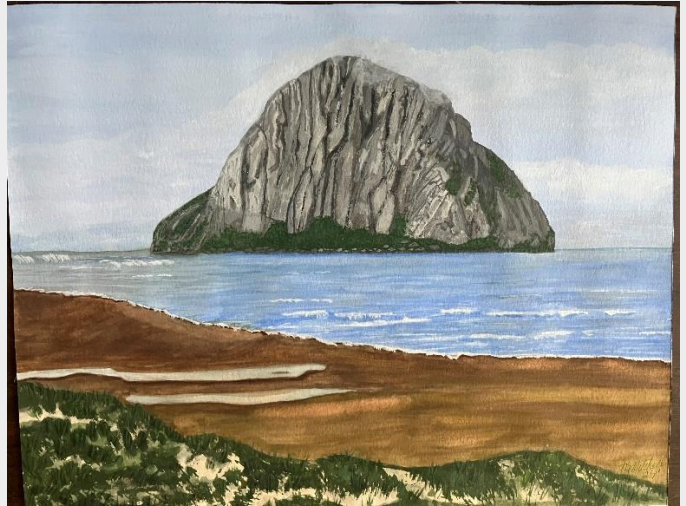
Respectfully submitted by the Recording Secretary,

Carolyn Lobkowitz

## MEMBER NEWS

### Sold!

Magaret Mitchell is happy to share that she sold several paintings! You may recall seeing these on the wall at the Friendly Home show just a few months ago. Congratulations Margaret!



## Community News

### Flower City Figure Study Drawing at The Art Stop

Hello Artist!

Please join us on Monday Night 6-9pm for Flower City Figure Study Drawing at The Art Stop!

Please spread the word! If you know of any other artists who are looking for in-person drawing opportunities, please forward this email to them and/or give me their contact information so I can add them to the list!

The Art Stop is located at 1822 Penfield Rd., Penfield NY 14526. Enter via door on Five Mile Line Rd.

The Art Stop LLC is an independent and locally owned fine art supply store in Penfield, NY. Manned by artists in the community, the store features a custom frame shop, art gallery, and 3,000 sq. ft. studio, where fine art lessons for children and adults are held. The studio also hosts a Stop, Paint & Sip all-inclusive workshop and birthday parties for children. The Art Stop offers personal services that can't be found elsewhere, as well as reasonable prices every day so you never have to clip coupons. Please check out all they have to offer online at <http://artstopllc.com/> or stop in during store business hours. Phone: 585-872-5710

Store Hours: Monday – Thursday 11:00-6:00, Friday 11:00-4:00 & Saturday 10:00-5:00

The upstairs 3000 sq. ft. studio can handle up to approximately 30 artist work areas. The model stand is located in the middle of the room and the model will make every effort to take advantage of the 360° views, so you don't always get the same view every pose. We now have 12 work stations in the form of a drawing horse-style bench which can be used with drawing boards we provide. We have 20+ drawing boards available for your use in the studio or you are always welcome to bring your own. Also for your use are many adjustable easels. In addition to these workstations we have chairs for use with drawing boards on your lap, and tables with chairs. We also provide binder clips to hold your drawing pad to the drawing board and clip booklights to illuminate your work area. There are many options - come early for the choice you want! During poses, please don't feel you are married to the position you originally picked out - feel free to move around the studio for the view you want.

FYI! Available for purchase for \$15 is the Flower City Figure Study: A Self-paced Drawing Course with a check off list as you progress through the night. The guide covers and explains complete with drawing examples the following concepts: Gesture Drawings, Blind Contour, Contour, Charcoal Mass, Highlight, Shadow, Cast Shadow & Reflected Light, Proportions of Face & Figure, and finally, putting it all together - The Long Pose.

If you have equipment/supplies/drawing books that you don't need anymore, please consider a donation to Flower City Figure Study! We would be sincerely grateful! Please remember to return borrowed books from our drawing library so others can have a chance to look through them too. You can always browse thru them while attending on Monday nights or take one home for the week! Just sign it out and bring it back in a week!

Contact the Art Stop for Details



## Topic of the Day

### Is AI Art (Artificial Intelligence Art) *Real* Art?

2024 was a big year for AI Art – and it is growing by leaps and bounds. Countless articles are being writtem (Here is one: <https://www.bbc.com/future/article/20241018-ai-art-the-end-of-creativity-or-a-new-movement>) and for better or worse, AI generated art is being submitted to shows and being auctioned at auction houses and even being copyrighted.

News sites like ArtNet News and others have constant articles on the topic. One I just spotted touches on many of the issues and topics: <https://www.artnews.com/p/artificial-intelligence-and-art-world/>

For me, I'm "old school". I want to create art with a paintbrush and a canvas ... not a computer. But for many artists that is not the case. Their art is generated from keystrokes and voice-to-text prompts into an AI Image generator.

What do you think? Will you embrace AI in your work, or will you stick to pencils and brushes too? Let the group know your thoughts!