



NEWSLETTER – DECEMBER 2025

Letter from the President

We are a quarter of the way through our PAG year, winter is here, it's cold and windy outside. Yet warm and cozy inside! I always look forward to the first snowfall. Dark nights and dark mornings. There is beauty in the snowfalls, they say no two snowflakes are alike! It's an opportunity to paint the beauty of the season. Frost bitten landscapes, children playing, sledding, snowmen. Holiday lights on houses. Hanukkah Candles. Christmas trees.

We have many more presenters to look forward to from 2025 to 2026! Our annual Barnes and Noble show will be here before you know it. I am looking forward to seeing all the paintings that will be in this show!

There are several openings for showing your work, (rotating exhibits) please check with Laura Davis to sign up, we need to fill these locations to keep them for us all to show our paintings there. New members these places are a great opportunity to let the public view and purchase your painting.

We still have five wonderful months of meetings coming up. Very interesting presenters with lots of information for us all. We also have booked Kings Bend Park for our annual Picnic! Let's get through winter first then onto sunny warm days!

Have a wonderful Holiday season and see you in January with Our member Barb Jablonski as our presenter. Happy Holidays to you all,

Margaret Mitchell

Letter from the Newsletter Editor

Wow – what a great stretch for the Pittsford Art Group. Great speakers and a successful show at the Friendly Home. Well done everyone!

Now all we need is more volunteers for the rotating exhibits. Please check out the schedule in this newsletter and contact Laura if you can fill in any open slots. It's a great opportunity to show your work and keep in mind that it is okay to share the space with a fellow artist.

Have a great holiday season and a super New Year and see you January!

Mike

UPCOMING & CURRENT CLUB EVENTS

NOTE THE SPECIAL January 8th DATE FOR NEXT MEETING

PAG January 8th Regular Meeting at The Pittsford Community Center

Speaker: Member, Barbara Jablonski



Nature is Barbara's Palette

Barbara Jablonski loves painting plein air, that is, on site, "in open air." Anywhere she travels she will paint -- the seashore, the mountains, our national parks and Europe. Barbara captures color and light while painting contemporary life in her landscapes. She loves painting architecture, backlit scenes, waterscapes and boats

Barbara initially studied painting using acrylics. After an art sabbatical, she resumed studio painting in 1996, studying portraiture and life painting in oil, pastel and water media. Her acclaimed instructors include artists Steve Carpenter and Robert Liberace. Plein air painting instructors include Kenn Backhaus, Mark Boedges, John Budicin, David Lussier, Thomas J. Kegler, Margaret M. Martin AWS, and Albert Handell.

Barbara is the President, Founder and Signature Artist of Genesee Valley Plein Air Painters, Inc. She is also a Signature Artist and member of the Artist Faculty of the Rochester Art Club, Inc. Additionally Barbara is an Associate Member of American Impressionist Society. She competes in local, state-wide and national judged and juried competitions.

She is represented by local art galleries including the Uof R Memorial Art Gallery Store, Sylvan Starlight Creations Artisan Gallery, and the Pat Rini Rohrer Gallery in Canandaigua, NY. She also displays at the Clothesline Art Festival.

Barbara presents plein air painting workshops in oil and acrylics and demonstrations throughout New York State. Courses include Introductory PAP Workshops and themed workshops such as Perspective Using Value and Temperature, Composition, Architecture, Painting the Backlit Vista, Boats, Waterscapes, and the Traveling Palette.



PAG Juried Show at the Friendly Home

NOVEMBER & DECEMBER

The show is underway and will end soon. Be sure to check it out. ARTISTS, do not forget to pick up your paintings on Monday Dec 29th between 9:00 and 11:00 am.

This Year's Judge: Gail Leess

An artist in her own right (oil and acrylic), Gail has worked with Nan Miller of Rochester's leading art gallery, the Nan Miller Gallery, for over 45 years. Gail traveled with Nan to countless art shows both nationally and internationally selecting art for the retail gallery in Rochester and promoting the gallery's exclusive artists for representation across the country. Over time, Gail became director of the gallery and to this day, continues to work with Nan on many special artist related projects and continues to discover new artistic talent and help those artists get represented. Gail provided feedback to all the exhibition artists, and we are pleased to provide the award winners in the photos that follow.

AWARD WINNERS

Best in Show

Cathy Swegler "Reflections"

Best Group of 3

Lois Zebelman "Get Well Bouquet", "Dreamy Pears", "Cosy Cabbage"

Juror Awards

Linda Vanozzi "Nantucket Window"

Ron Boehner "The Magic Garden"

Ann Limbeck "Pumpkin Flower Stand"

Mike Kamish "Shadows 1"

Joanne Andrews "Vegetables"

Carol Goldsmith "Banff Lunch"

Merit Awards

Hiroko Jusko "I Hate Bath"

Michele Piraino "Rainbow Trout"

Nies Welsh "Gatelock"

Jennie Miller "Sleeping Beauty"

Carolyn Lobkowitz "Fergie"

Joe Sirianni "What's Your Story"

Award Winners

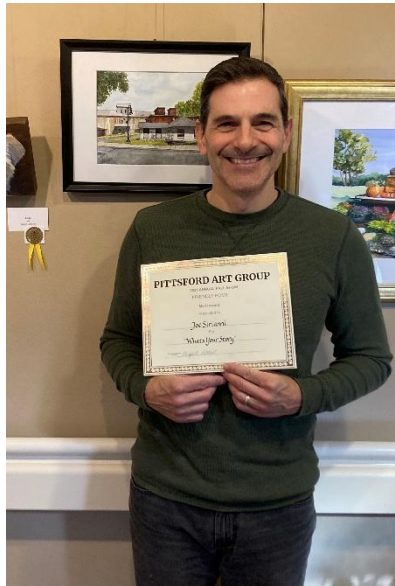
(Sorry that we do not have photos of all of you! We'll try and get them for the next Newsletter)

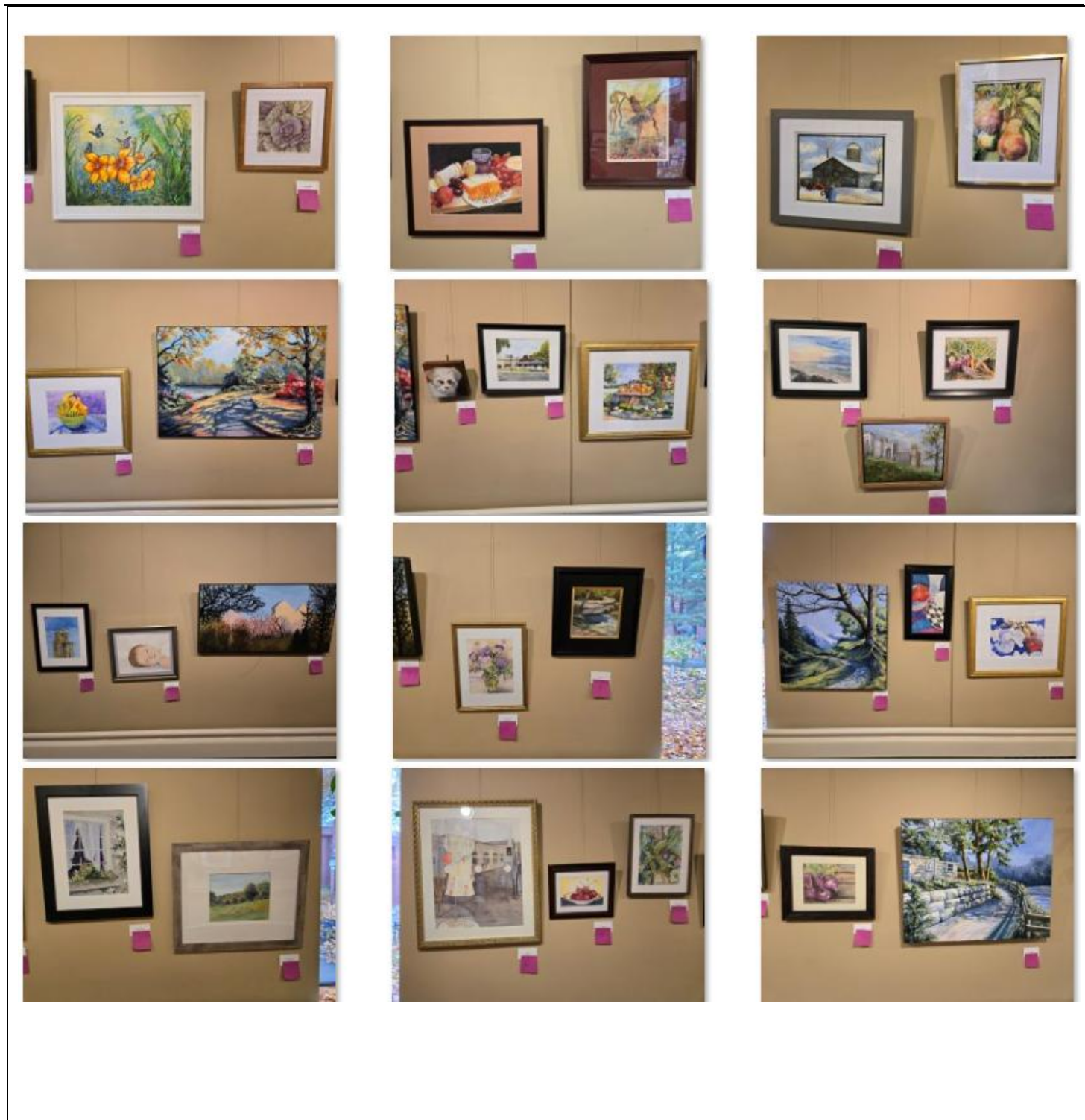


Best-In-Show
Cathy Swegler



Body of Work
Lois Zebelman







OTHER REMINDERS

Check the PAG website for a list of all upcoming events and meetings. <https://pittsfordartgroup.com/>

Guest Policy

GUESTS interested in joining are welcomed and encouraged to join us at our monthly meetings to hear and see what's going on and to watch our wonderful demonstrators. To help with rising costs it would be appreciated if an entirely optional \$5.00 donation was made to the group for in-person attendance. Any donation amount made will be applied to the joining fee.

Sunshine Committee

Sylvia Ball will send occasion-appropriate cards to members or their families. If you know of someone who is ill or a member that has passed, please contact Sylvia.

ROTATING EXHIBITS FOR 2026

THERE ARE STILL OPENINGS. WE NEED YOUR HELP!

The rotating exhibits are an opportunity for members to display their work at various locations around town. If you have questions about this schedule, please contact **Laura Davis**. Remember - you can share any of these exhibit spaces with other members!

Contact Laura Davis at Davisdyn@rochester.rr.com to sign up

Venue->	Pittsford Town Hall	Friendly Home Main	Star P.T.	Presbyterian Church
# pieces->	12	22	16	12
Jan- Mar	B. Jablonski		L. Davis	L. Davis J. Paperno
Apr- Jun	D. Ingerick	J. Andrews		
Jul - Sep	L. Sciortino	A. Limbeck J. Miller		H. Jusko
Oct - Dec	K. Wallin		P. Fahy	N. Welsh

CLUB LEADERSHIP 2025 – 2026 Positions

Current Positions

Executive Board Officers

- President, Margaret Mitchell
- Vice-President, Mike Kamish
- Treasurer, Debi Bloom
- Recording Secretary, Carolyn Dey Lobkowicz
- Corresponding Secretary, Joe Sirianni

Standing Committees

- Membership, Carol Schott
- Refreshments, Paula Fahey
- Rotating Exhibits, Laura Davis
- Sunshine, Sylvia Ball
- Website, Joe Sirianni
- Publicity, Linda Vannozzi
- Newsletter, Mike Kamish
- Speakers, Margie Mitchell & Mike Kamish

Open Positions

We are now seeking new Board and Committee Members to replace leaders that have been at it for years. This is your club – please be part of it by participating on the Board or a Committee. Open positions are listed below. Current leaders will “show you the ropes” so we can make this very easy. Everyone who has participated in this way says they get a lot more out of the club – and make new friends – when they actively participate in this way. Please participate!

Open Executive Board Officers

- Recording Secretary
- Corresponding Secretary

Standing Committees

- Website
- Speakers

RECENT EVENTS

PAG November 6th Regular Meeting at The Pittsford Community Center

Speaker: Larry Keefe, Watercolor Artist



Watercolor artist Laurence Keefe has worked around the graphic arts his entire life, starting with life classes in college, a stint in photojournalism, marketing conservation materials and writing *Life of a Photograph*, a standard reference for collectors.

Laurence's passion for watercolor started in high school when he first saw the work of Rochester master Ralph Avery and realized you could make great art anywhere, even in his hometown.

Laurence worked in charcoal and pastel at the O'Neill Studio for three years to acquire the expertise that informs his watercolors. Besides training with artists Brian O'Neill and Jean Lindsay, he has studied with many teachers and at workshops by leading national artists.

He is a signature member of the Rochester Art Club, exhibits in the Lucy Byrnes Gallery of the Memorial Art Gallery and at the Rochester /Finger Lakes Exhibition, and has won multiple awards for his work.

Laurence now teaches beginning and advanced classes at the Creative Workshop at the Memorial Art Gallery. He works primarily in landscape and photo-realist abstractions.

"It's a moment of delight," Laurence says, "when a loaded brush touches the paper and an image pours out of it."

Some Photos from Larry's Presentation

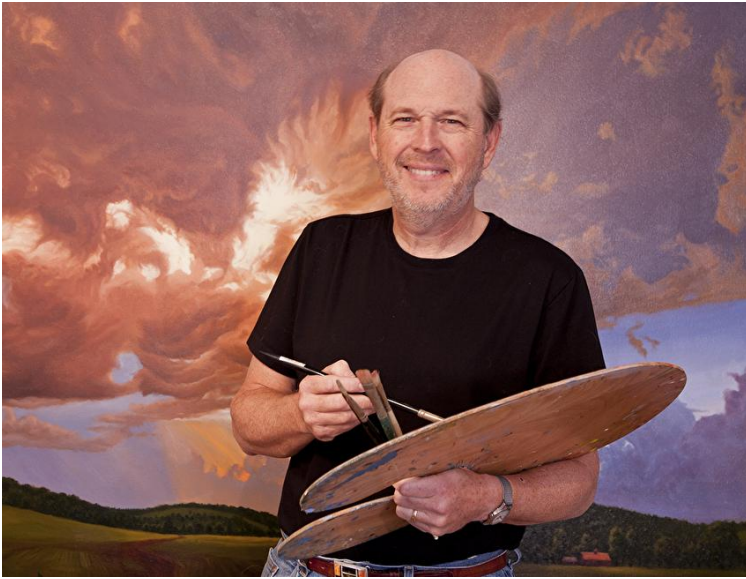




PAG December 4th Regular Meeting at The Pittsford Community Center

Speaker: John Hulsey, Oil, WC, & Pastel Artist

(Also Remote on Zoom)



Painter in Oil, Watercolor and Pastel

John Hulsey is a life-long professional artist with broad experience and expertise in multiple painting mediums, including oil, watercolor, pastel, inks, dyes and gouache. His other professional media include printmaking, photography and sculpture. "I have always believed in the Renaissance idea that an artist should be curious about the world and should constantly educate himself and experiment, so that he is defined by the quality of his creative abilities, not limited or restricted to any one medium or form. This creative voice, then, shines through whatever materials come to hand." His work has been exhibited in many solo and group exhibitions, and in galleries in New York, Ohio, South Carolina, Missouri, Kansas, Texas, Wyoming and California. He is

the recipient of numerous awards and grants. One of his paintings was featured on the cover of Time Magazine and his paintings are included in many private and corporate collections: The National Portrait Gallery, Smithsonian Institution, Washington, D.C.; McGraw Hill Publishing, New York, New York, The Environmental Law Institute, Washington, D.C.; The University of South Carolina Medical School; Blue Cross/Blue Shield, St. Louis, Missouri; Pace University Environmental Law School, White Plains, New York; the Hudson River Reference Collection, Garrison, New York; The Hudson Riverkeeper Fund, Garrison, New York and the United States Embassies in Australia and Jordan.

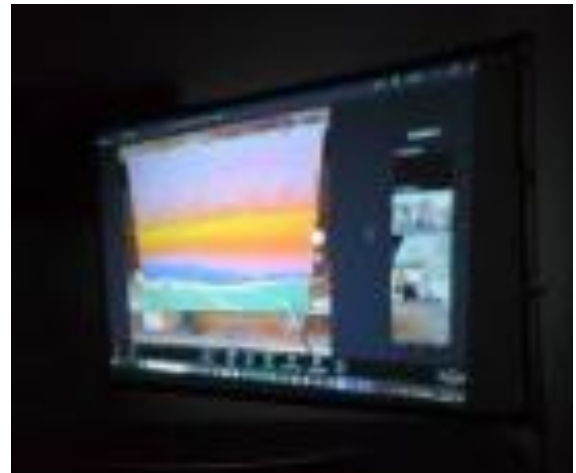
John is also a dedicated and popular teacher, who has been helping other aspiring artists grow their skills and artistic voices for over three decades. Along with his artist - wife Ann Trusty, the couple designed, organized and taught painting workshops in France and Italy for several decades. In pandemic times, which ended those European workshops and any in-studio classes, he quickly learned to teach painting classes online, offering live watercolor and oil demonstrations each week.

John's artwork has been featured in American Artist magazine, Watercolor Magazine, Fine Art Connoisseur magazine and International Artist Magazine, where he was named a Master Painter of the United States. He has been awarded residencies by the National Parks Service at Glacier National Park, Yosemite National Park, and Rocky Mountain National Park. Watercolor magazine featured John's plein air painting workshops in Provence, France in the Fall, 2004 issue. A monograph on his artwork appeared in the April 2006 issue of Fine Art Connoisseur Magazine. In 2019, International Artist magazine asked him to create a seven-part series of articles, A Painter's Journey, which chronicles the development of his solo exhibition, Transcendence: Truth in Nature. The premier opening of the Transcendence exhibition was in February 2023 at the Albrecht-Kemper Museum of Art in St. Joseph, Missouri. From there it traveled to The Lawrence Arts Center, Lawrence, Kansas, to open in June, 2023, which featured an additional 5 major oil paintings.



Some Photos from John's Presentation

(It was a great presentation but it was hard to get any photos for a Zoom meeting because the room was dark – but we tried!)



MEETING NOTES – General Meeting 11/6/2025

Pittsford Art Group
General Meeting
Spiegel Community Center
36 Lincoln Avenue
Pittsford, NY 14534

Twenty-two PAG members met at the Spiegel Center for the November General Meeting.

Board members present were Margie Mitchell, President; Mike Kamish, Vice President; Debi Bloom, Treasurer; Joe Sirianni, Corresponding Secretary; Carolyn Lobkowicz, Recording Secretary.

Our President opened the Business meeting with a big thank you to Debi and Mike for their continued dedication to our fall show at the Friendly Home.

Our PAG Treasurer reported a \$2,402 balance.

Margie reminded everyone to attend the Awards ceremony and reception, 11 am Saturday at the Friendly Home. The Show judge plans to attend and will address the group.

We now have Zoom again and that will make recording and viewing general meetings easier.

Linda Vannozzi, Publicity Chair who has done a great job, is relocating and her position will be open January 2026.

Laura Davis reminded the group that she still has several open slots for our rotating community exhibits.

The Business meeting closed at 7:15 and was turned over to our presenter, Larry Keefe who gave a watercolor demonstration.

MEETING NOTES – General Meeting 12/4/2025

Pittsford Art Group
General Meeting
Spiegel Community Center
36 Lincoln Avenue
Pittsford, NY 14534

PAG members met on December 4 at the Spiegel Center for the December General Meeting.

Mike Kamish, Vice President, represented the Board for this meeting. Margaret Mitchell, President; Debi Bloom, Treasurer; and Carolyn Lobkowicz, Recording Secretary joined the meeting via the Zoom link.

Carol Schott, Membership Chair, also joined us online.

Margie opened the business meeting at 7 pm with a welcome to all and recognition of any new members. She also noted that we will meet on January 8, since the first Thursday is New Year's Day. Margie thanked all who participated in the Friendly Home Show, especially the members who provided a nice reception.

Debi reported an account balance of \$1781.08.

There were no questions or concerns from the floor and the business meeting closed at 7:10 pm.

John Hulse, a well-known painter, then joined us online from Kansas for an oil painting demonstration.

Respectfully submitted by Carolyn Lobkowitz, Recording Secretary.

MEMBER NEWS

Don't forget to send me any news about your art related experiences and adventures. We also welcome articles as well – so be sure to share those.

SOLD!

Mike is happy to report that he has on a wild streak and sold five paintings: a 24x24 painting of the Mitchell Road Bridge, two 18x24 landscapes, and a pair of 30x40 mountain landscapes.

WEB SITE for ART SALES?

Mike checked out the web site that Presenter John Hulsey used. It's by a company called "Faso" and their web site is <https://www.faso.com/> They offer several "templates" for setting up your site and multiple price-points. Notably for him, is that for about \$144/year (Intro Plan) or \$230/year (for the Silver Plan) the web site provides for 40 to 100 images, credit card transactions, newsletter support, a branded email address, and a preview feature where people can upload a photo of their room and see how a painting looks on their wall.

We can't judge the site beyond their web promotion – but those are all things that are of interest to many of us - so Mike plans to ask John what he thinks of it – and if he says he has had a good experience – then he intends give it a try, starting at either the \$12/month or \$19/month levels. Those of you that are interested in selling paintings might want to also consider this type of approach (There are several companies out there offering similar services. Mike chose this as a starting point because John Hulsey uses them).

INTRO \$12/MO <small>Billed Annually at \$144 USD</small>	SILVER \$19/MO <small>Billed Annually at \$228 USD</small>	GOLD \$26/MO <small>Billed Annually at \$312 USD</small>	PLATINUM \$40/MO <small>Billed Annually at \$480 USD</small>
BoldBrush Circle Membership	BoldBrush Circle Membership	BoldBrush Circle Membership	BoldBrush Circle Membership
Marketing Books & Videos	Marketing Books & Videos	Marketing Books & Videos	Marketing Books & Videos
Private Marketing Webinars	Private Marketing Webinars	Private Marketing Webinars	Private Marketing Webinars
Private Marketing Newsletter	Private Marketing Newsletter	Private Marketing Newsletter	Private Marketing Newsletter
Private Artist Community	Private Artist Community	Private Artist Community	Private Artist Community
Private Facebook Group	Private Facebook Group	Private Facebook Group	Private Facebook Group
Art Marketing Calendar	Art Marketing Calendar	Art Marketing Calendar	Art Marketing Calendar
Art Prints on Demand (Beta)	Art Prints on Demand (Beta)	Art Prints on Demand (Beta)	Art Prints on Demand (Beta)
- Your buyers choose size & frame	- Your buyers choose size & frame	- Your buyers choose size & frame	- Your buyers choose size & frame
- Shipped Directly to your buyer	- Shipped Directly to your buyer	- Shipped Directly to your buyer	- Shipped Directly to your buyer
Mobile Optimized Website with up to 40 Images	Mobile Optimized Website with up to 100 Images	Mobile Optimized Website with Unlimited Images	Mobile Optimized Website with Unlimited Images
- 3 Collections	- 7 Collections	- Unlimited Collections	- Unlimited Collections
- 3 Event Listings	- Unlimited Event Listings	- Unlimited Event Listings	- Unlimited Event Listings
- No Workshop Listings	- No Workshop Listings	- Unlimited Workshop Listings	- Unlimited Workshop Listings
- Add More Images for \$25/image/month	- Add More Images for \$25/image/month	- Never pay for image uploads again!	- Never pay for image uploads again!
Basic Commerce	Basic Commerce	Advanced Commerce	Advanced Commerce
- Fully Integrated Ecommerce	- Fully Integrated Ecommerce	- Fully Integrated Ecommerce	- Fully Integrated Ecommerce
- Paypal Checkout (No FASO Transaction Fees)	- Paypal Checkout (No FASO Transaction Fees)	- Paypal Checkout (No FASO Transaction Fees)	- Paypal Checkout (No FASO Transaction Fees)
Credit Cards with Stripe (10% FASO Transaction Fees)	Credit Cards with Stripe (3% FASO Transaction Fees)	Credit Cards with Stripe (2% FASO Transaction Fees)	Credit Cards with Stripe (1% FASO Transaction Fees) [0% on \$79/mo Platinum+ Plan]
Video Hosting	Video Hosting	Advance Commerce Features	Advance Commerce Features
- Add videos for .02/min/month	- 60 video minutes included	- Abandoned Checkout Emails	